

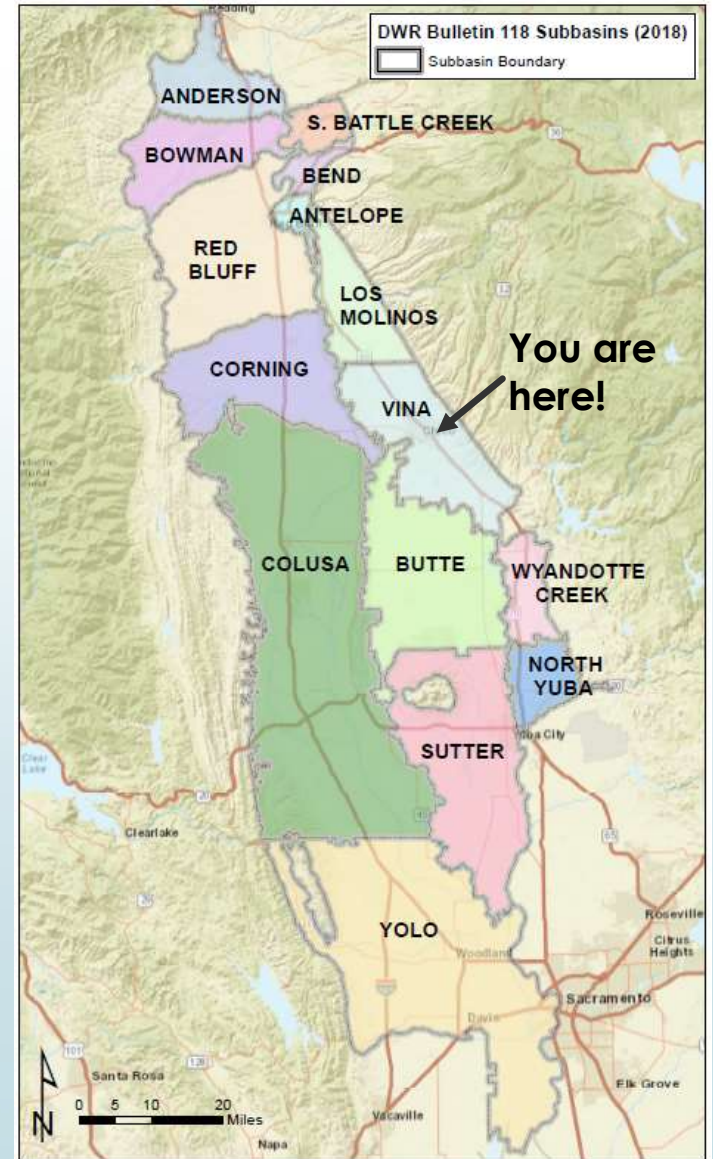
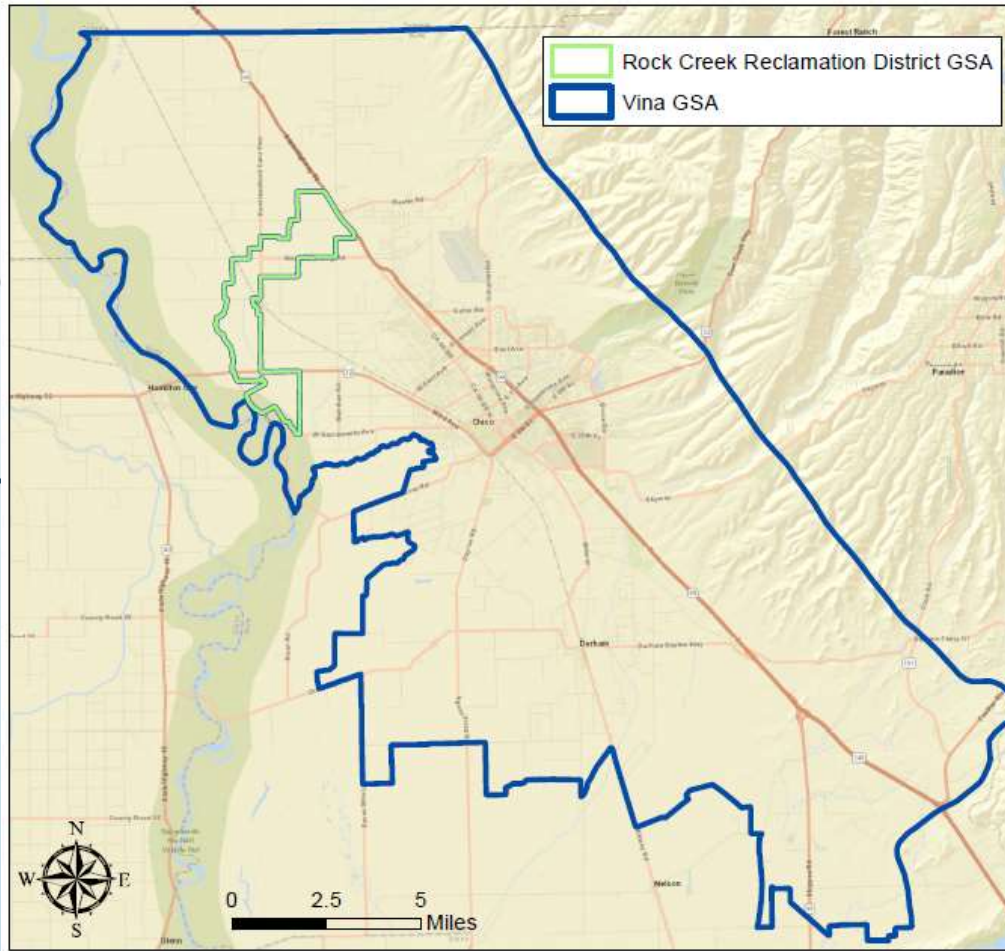


# GSP Implementation: Inter-basin Coordination

## Today's Topic

- Receive input/recommendations on which pillars should be included or emphasized in the draft GSP description of intended interbasin coordination as part of plan implementation
- Discuss proposed “Pillars” from the Northern Sacramento Valley Inter-basin Coordination Report in relation to the Vina Subbasin and its neighbors
- Consider proposed recommendations and refine or modify based on SHAC’s feedback
- Report is Available Here:  
[http://www.buttecounty.net/wrcdocs/planning/SGWMA/InterbasinCoordination/210707\\_NSV\\_IB\\_Coord\\_Report\\_Final.pdf](http://www.buttecounty.net/wrcdocs/planning/SGWMA/InterbasinCoordination/210707_NSV_IB_Coord_Report_Final.pdf)

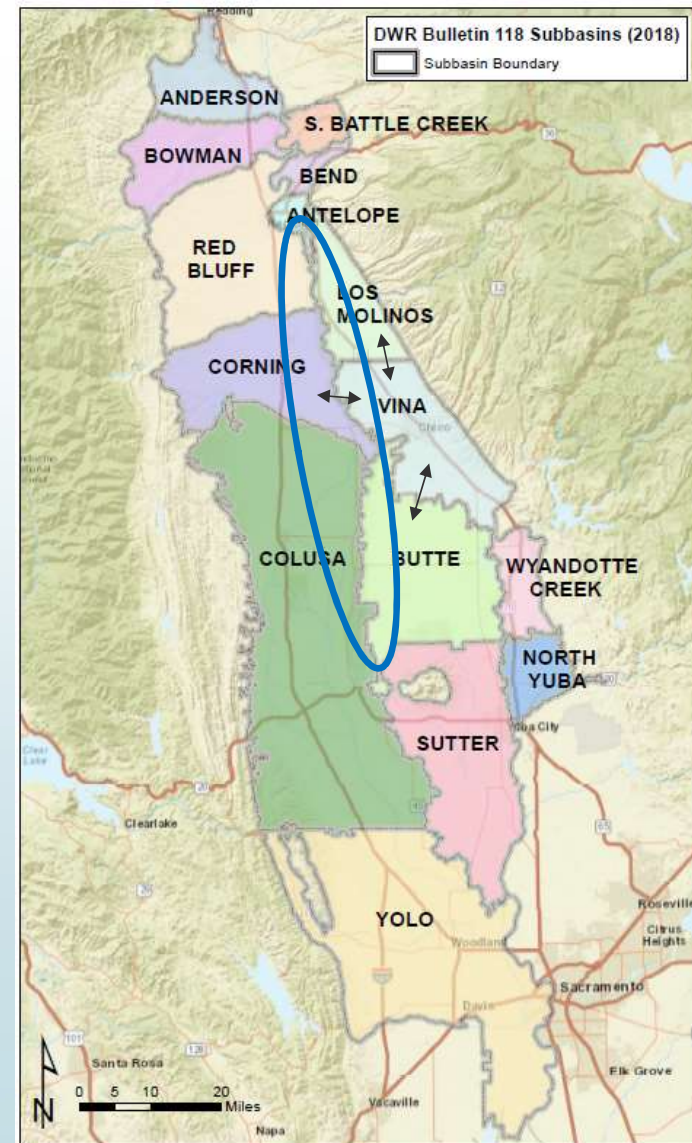
# Vina Subbasin



3

## With which Subbasins do we Coordinate? What's the focus?

- ▶ Los Molinos
- ▶ Butte Subbasin
- ▶ Corning
- ▶ **North Sac River Corridor** (Antelope, Los Molinos, Red Bluff, Corning, Vina, Butte, Colusa)
- ▶ All of the Above



# Pillars: Menu of coordination topics/activities

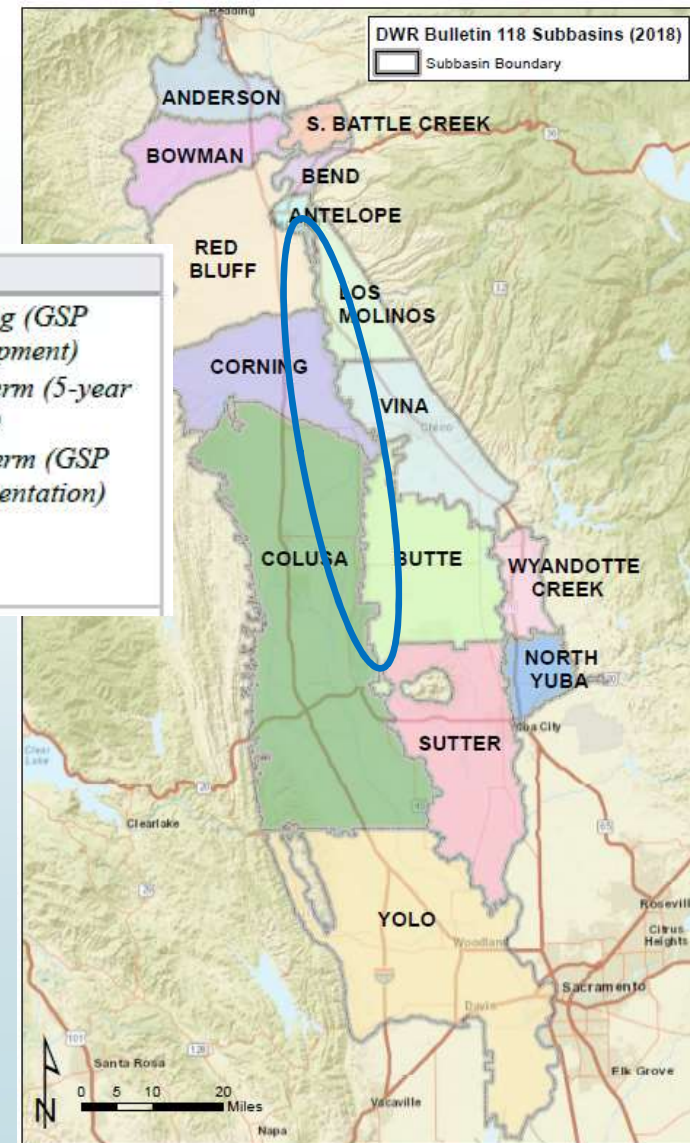
Pillars	Scale(s)	Timing
<b>1. Information-sharing</b> <ol style="list-style-type: none"> <li>Inform each other on changing conditions (i.e., surface water cutbacks, land use changes, policy changes that inform groundwater management)</li> <li>Share annual reports and interim progress reports</li> <li>Share data and technical information and work towards building shared data across and/or along basin boundaries (e.g., monitoring data, water budgets, modeling inputs and outputs, and Groundwater Dependent Ecosystems)</li> </ol>	<ul style="list-style-type: none"> <li>Neighbor-to-neighbor</li> <li>Coordination groups [Refer to section 4.1 below]</li> </ul>	<ul style="list-style-type: none"> <li>Ongoing (GSP Development)</li> <li>Near-term (5-year update)</li> <li>Long-term (GSP implementation)</li> </ul>
<b>2. Joint analysis &amp; evaluation</b> <ol style="list-style-type: none"> <li>Evaluate and compare contents of GSPs with a focus on establishing a common understanding of basin conditions at boundaries</li> <li>Identify significant differences, uncertainties, and potential issues of concern related to groundwater interaction at the boundaries</li> <li>Engage in analysis and evaluation of SMCs between GSPs to assess impacts and identify significant differences and possible impacts between subbasins that could potentially lead to undesirable results</li> </ol>	<ul style="list-style-type: none"> <li>Neighbor-to-neighbor</li> <li>Coordination groups [Refer to section 4.1 below]</li> </ul>	<ul style="list-style-type: none"> <li>Near-term (5-year update)</li> <li>Long-term (GSP implementation)</li> </ul>
<b>3. Coordination on mutually beneficial activities</b> <ol style="list-style-type: none"> <li>Communicate, coordinate, and collaborate on mutually beneficial activities, which could include joint monitoring, joint reporting, regional modeling, and other efforts to address data gaps at subbasin boundaries</li> <li>Collectively pursue funding and collaborate on mutually agreed upon projects and management actions that provide benefits across boundaries</li> <li>Leverage existing collaboratives (NSV IRWM, NCWA etc.)</li> </ol>	<ul style="list-style-type: none"> <li>Neighbor-to-neighbor</li> <li>Coordination groups</li> <li>Regional: NSV IRWM, NCWA Groundwater Task Force</li> </ul>	<ul style="list-style-type: none"> <li>Ongoing (GSP Development)</li> <li>Near-term (5-year update)</li> <li>Long-term (GSP implementation).</li> </ul>
<b>4. Coordinated communication and outreach</b> <ol style="list-style-type: none"> <li>Coordinate and collaborate on regional-scale public engagement and communication strategies that promote awareness on groundwater sustainability, enhance public trust, and maintain institutional knowledge</li> <li>Maintain list of GSP/subbasin staff contacts and websites</li> </ol>	<ul style="list-style-type: none"> <li>Regional: NSV IRWM and NCWA Groundwater Task Force</li> </ul>	<ul style="list-style-type: none"> <li>Ongoing (GSP Development)</li> <li>Near-term (5-year update)</li> <li>Long-term (GSP implementation)</li> </ul>
<b>5. Issue-resolution process</b> <ol style="list-style-type: none"> <li>Establish and follow an agreed-upon process for identifying and resolving conflicts between GSAs by the first five-year update [Refer to <a href="#">Appendix D</a> for more details and discussion prompts on issue resolution processes]</li> </ol>	<ul style="list-style-type: none"> <li>Neighbor-to-neighbor</li> <li>Coordination groups</li> </ul>	<ul style="list-style-type: none"> <li>Near-term (5-year update)</li> <li>Long-term (GSP implementation).</li> </ul>

# Pillar 1. Information Sharing

Pillars	Scale(s)	Timing
<b>I. Information-sharing</b> <ol style="list-style-type: none"> <li>Inform each other on changing conditions (i.e., surface water cutbacks, land use changes, policy changes that inform groundwater management)</li> <li>Share annual reports and interim progress reports</li> <li>Share data and technical information and work towards building shared data across and/or along basin boundaries (e.g., monitoring data, water budgets, modeling inputs and outputs, and Groundwater Dependent Ecosystems)</li> </ol>	<ul style="list-style-type: none"> <li>Neighbor-to-neighbor</li> <li>Coordination groups [Refer to section 4.1 below]</li> </ul>	<ul style="list-style-type: none"> <li>Ongoing (GSP Development)</li> <li>Near-term (5-year update)</li> <li>Long-term (GSP implementation)</li> </ul>

- Relevant to all neighboring subbasins (All of the Above)

Recommendation: Vina Subbasin will work with GSA staff of neighboring subbasins to identify lines of communication and methods for information sharing



## Pillar 2. Joint analysis & evaluation

### 2. Joint analysis & evaluation

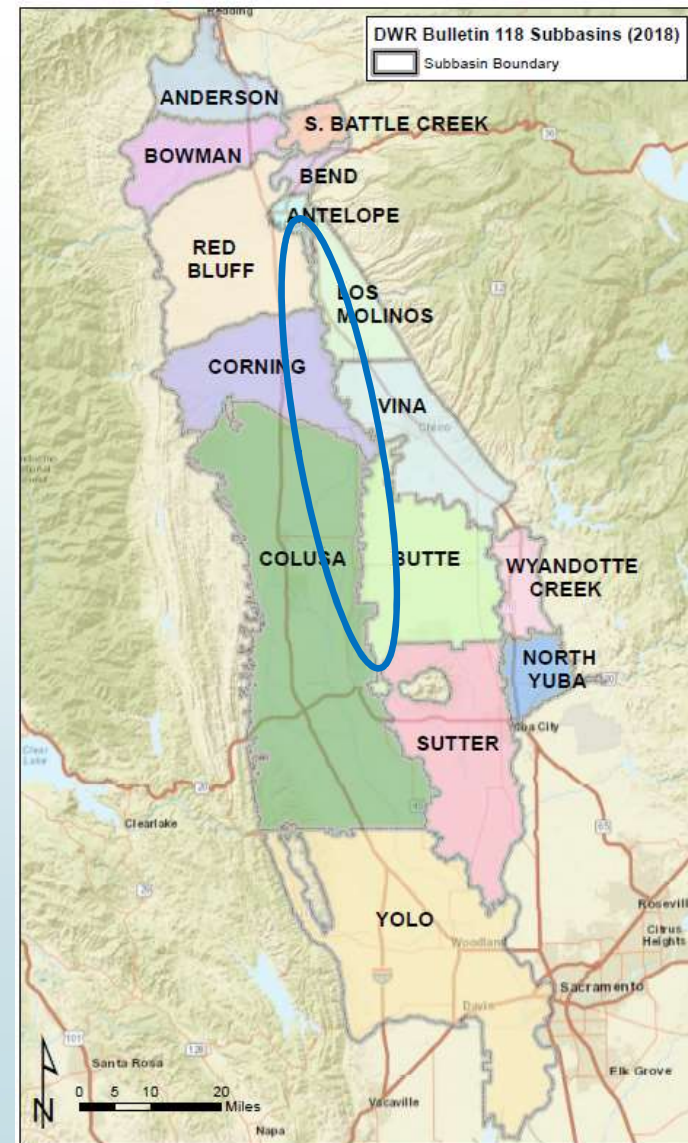
- a. Evaluate and compare contents of GSPs with a focus on establishing a common understanding of basin conditions at boundaries
- b. Identify significant differences, uncertainties, and potential issues of concern related to groundwater interaction at the boundaries
- c. Engage in analysis and evaluation of SMCs between GSPs to assess impacts and identify significant differences and possible impacts between subbasins that could potentially lead to undesirable results

- Neighbor-to-neighbor
- Coordination groups [Refer to section 4.1 below]

- *Near-term (5-year update)*
- *Long-term (GSP implementation)*

## Pillar 2. Joint analysis & evaluation

- ▶ **Recommendation: Vina Subbasin intends to pursue funding and collaboratively work with subbasins in the North Sac River Corridor group to**
  - a. Contract with a consultant to conduct this work
  - b. Evaluate and compare contents of GSPs with a focus on establishing a common understanding of basin conditions at boundaries
  - c. Identify significant differences, uncertainties, and potential issues of concern related to groundwater interaction at the boundaries
  - d. Engage in analysis and evaluation of SMCs between GSPs to assess impacts and identify significant differences and possible impacts between subbasins that could potentially lead to undesirable results



## Pillar 3. Coordination on mutually beneficial activities

### 3. Coordination on mutually beneficial activities

- a. Communicate, coordinate, and collaborate on mutually beneficial activities, which could include joint monitoring, joint reporting, regional modeling, and other efforts to address data gaps at subbasin boundaries
- b. Collectively pursue funding and collaborate on mutually agreed upon projects and management actions that provide benefits across boundaries
- c. Leverage existing collaboratives (NSV IRWM, NCWA etc.)

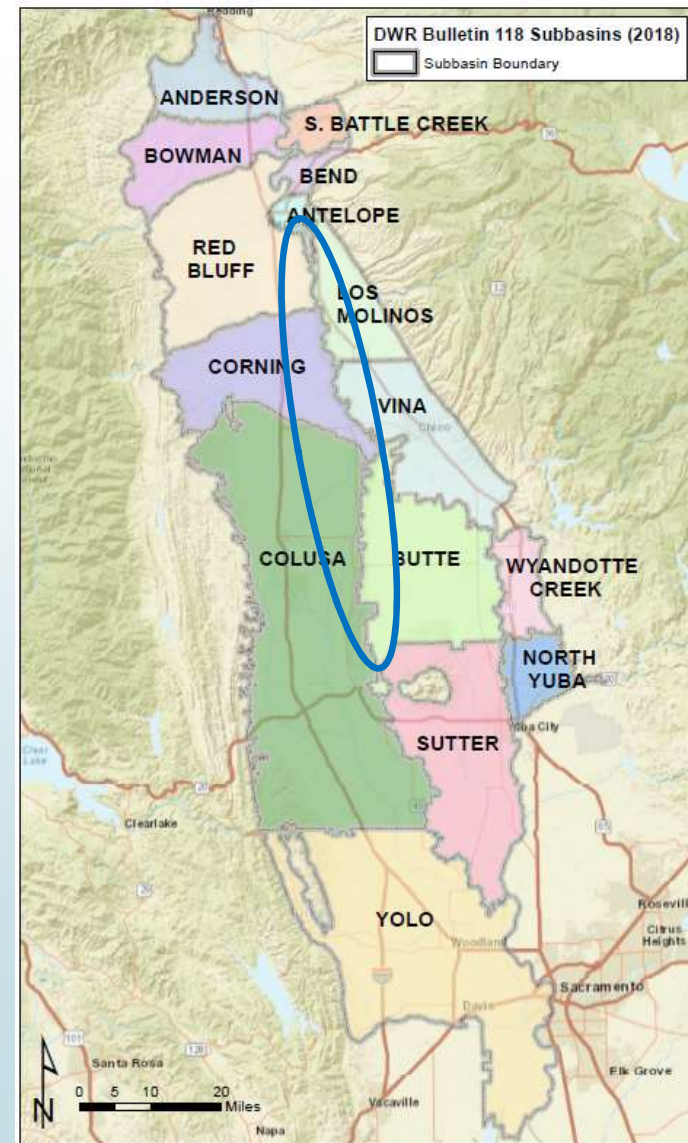
- Neighbor-to-neighbor
- Coordination groups
- Regional: NSV IRWM, NCWA Groundwater Task Force

- *Ongoing (GSP Development)*
- *Near-term (5-year update)*
- *Long-term (GSP implementation).*



## Pillar 3. Coordination on mutually beneficial activities

- ▶ Recommendation- Work collaboratively with [North Sac Valley Corridor subbasins](#) to identify items in our GSPs that are ripe for a coordinated project and pursuit of funding:
  - ▶ Projects and Management Actions
  - ▶ Data Gaps → new monitoring wells, stream gaging etc.
- ▶ Vina Subbasin will pursue grant funding to support a consultant to conduct this work
- ▶ Vina Subbasin will work collaboratively with the Northern California Water Association (NCWA) in their efforts to pursue funding and support local and state agency activities to identify and fill regional data gaps



## Pillar 4. Coordinated communication and outreach

### 4. Coordinated communication and outreach

- a. Coordinate and collaborate on regional-scale public engagement and communication strategies that promote awareness on groundwater sustainability, enhance public trust, and maintain institutional knowledge
- b. Maintain list of GSP/subbasin staff contacts and websites

- Regional: NSV IRWM and NCWA Groundwater Task Force

- *Ongoing (GSP Development)*
- *Near-term (5-year update)*
- *Long-term (GSP implementation)*

- Relevant to all neighboring subbasins (All of the Above)
- Recommendation: Vina GSA staff will continue to participate in regional public engagement activities and efforts related to implementation of SGMA in the Northern Sacramento Valley.

## Pillar 5. Issue-resolution process

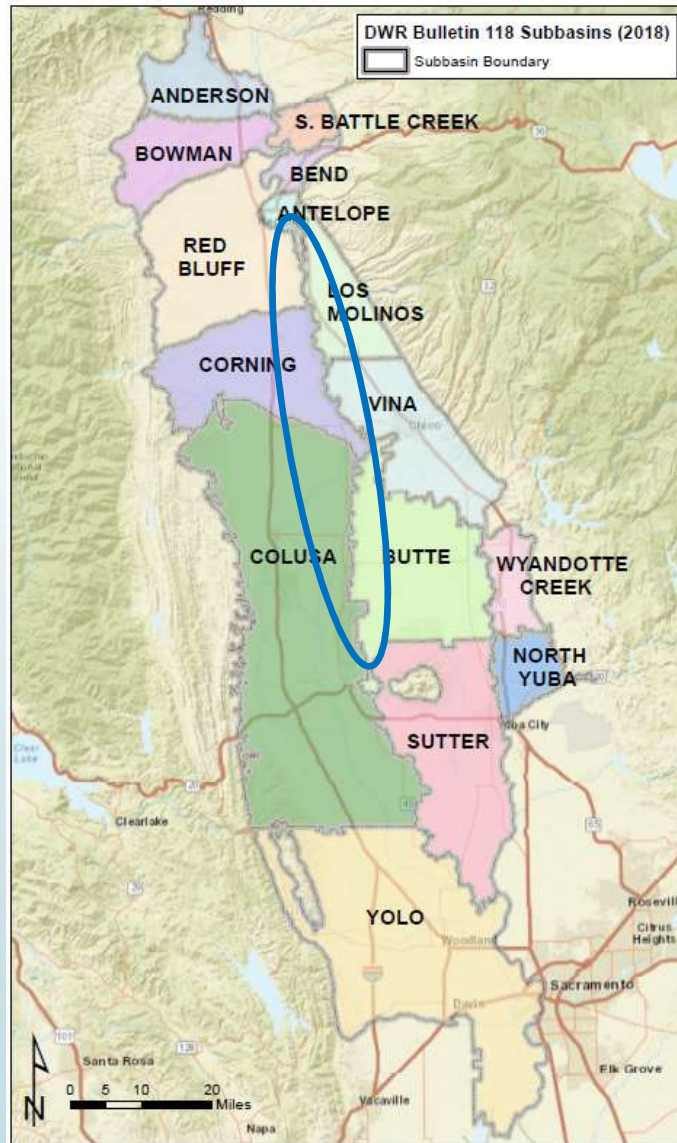
### 5. Issue-resolution process

- a. Establish and follow an agreed-upon process for identifying and resolving conflicts between GSAs by the first five-year update [Refer to [Appendix D](#) for more details and discussion prompts on issue resolution processes]

- Neighbor-to-neighbor
- Coordination groups

- *Near-term (5-year update)*
- *Long-term (GSP implementation).*

- Question: Should this be pursued with
  - Los Molinos?
  - Corning?
  - Butte?
- Recommendation: Vina Subbasin will pursue development of an issue-resolution process with \_\_\_\_\_ Subbasin(s)



Any additional component to add or to emphasize?