



BUTTE COUNTY BUTTE COUNTY WATER COMMISSION

REGULAR MEETING AGENDA

OCTOBER 1, 2025

1:30 PM

KAMELA LOESER, DIRECTOR
308 NELSON AVENUE
OROVILLE, CA 95965
TELEPHONE: 530.552.3595
FAX: 530.538.3807
Email: bcwater@buttecounty.net
www.butte.county.net/1117/water-resource-conservation

MEMBERS OF THE COMMISSION
DONNA BAYLISS, DISTRICT 1
TOVEY GIEZENTANNER,
DISTRICT 2
AIMEE RAYMOND, DISTRICT 3
FRED MONTGOMERY, DISTRICT
4
MAUNY ROETHLER, DISTRICT 5
DISTRICT WATER LANDOWNERS
MATTHEW TENNIS
PETER RYSTROM
PRIVATE WELL LANDOWNERS
DAVIN ARVONEN
GEORGE "ERNIE" WASHINGTON

MEETING LOCATION
BOARD OF SUPERVISORS CHAMBERS
25 COUNTY CENTER DRIVE, SUITE 205
OROVILLE, CALIFORNIA

1. CALL TO ORDER

2. APPROVAL OF MINUTES

a. ***Approval of Minutes from the August 6, 2025, Water Commission meeting**

Action Requested — Review and approve

3. PUBLIC MEMBERS WISHING TO ADDRESS THE COMMISSION ON ITEMS NOT LISTED ON THE AGENDA

The Water Commission is prohibited by law from taking action on any item presented if it is not listed on the agenda. Comments will be limited to three (3) minutes per person.

4. PRESENTATIONS

a. **Presentation on results of the Surface Water Supply Feasibility Analysis and Preliminary Project Design (*Jenny Scheer, Water and Land Solutions*)**

Ms. Scheer will provide an overview of the results of the feasibility analysis of the two selected water supply projects: South Vina Extension (would utilize Western Canal Water District or Table A water to irrigate parcels in south Vina) and Ridge to Valley (would utilize Paradise Irrigation District water to irrigate parcels along Comanche Creek south of Chico).

Action requested: None. Provide feedback and accept as information.

b. ***Groundwater Conditions Update (*Kelly Peterson, Water Resources Scientist, Water and Resource Conservation*)**

Staff will provide an overview of the 2025 water year hydrological and groundwater quality trend conditions.

Action requested: None. Provide feedback and accept as information.

5. UPDATES

- a. Sustainable Groundwater Management Projects Update**
- b. Butte Subbasin**
- c. Vina and Wyandotte Creek Subbasins**
- d. Interbasin Coordination**
- e. Other County Department Updates**

6. OTHER BUSINESS

7. FUTURE MEETING DATES AND AGENDA ITEMS

- a. Date and Location of the Next Meeting:
December 3, 2025
Butte County Board of Supervisors Chambers
25 County Center Drive, Oroville**

- b. Requests of the Water Commission for Future Agenda Topics**

8. COMMISSIONERS WISHING TO ADDRESS ITEMS NOT LISTED ON THE AGENDA

The Water Commission is prohibited by state law from taking action on any item presented if it is not listed on the agenda.

9. COMMUNICATIONS RECEIVED AND FILED

Copies of all communications are available at the Butte County Department of Water and Resource Conservation, 308 Nelson Avenue, Oroville, California, and are attached in the agenda packet.

- a. *Communications Received and Referred to the Butte County Water Commission.**

10. ADJOURNMENT

Provide Public Comment - Members of the public can submit public comment in one of two ways:

- 1. In person by attending the meeting at the specified location
- 2. Email BCWater@ButteCounty.net by noon the day before the meeting is to occur.

When submitting public comment via email, please indicate the item number your comment corresponds to in the subject line.

Email comments submitted before noon the day before the meeting will be sent to the full

Water Commission electronically prior to the start of the meeting. Email comments submitted after noon are not guaranteed to reach the Water Commission prior to discussion. All comments will be made part of the record.

Comments are limited to one comment, per item, per attendee and are to be no more than three minutes in length.

Individuals who need special assistance or a disability-related modification or accommodation to participate in this meeting, or who have a disability and wish to request an alternative format for the meeting materials, should contact BCWater@buttecounty.net as soon as possible to ensure arrangements for accommodation.

**Items marked with an asterisk (*) indicate that backup material is included in the agenda packet.*

Vina Subbasin Surface Water Supply Feasibility Analysis

Jenny Scheer
Maddie Munson



Project Options

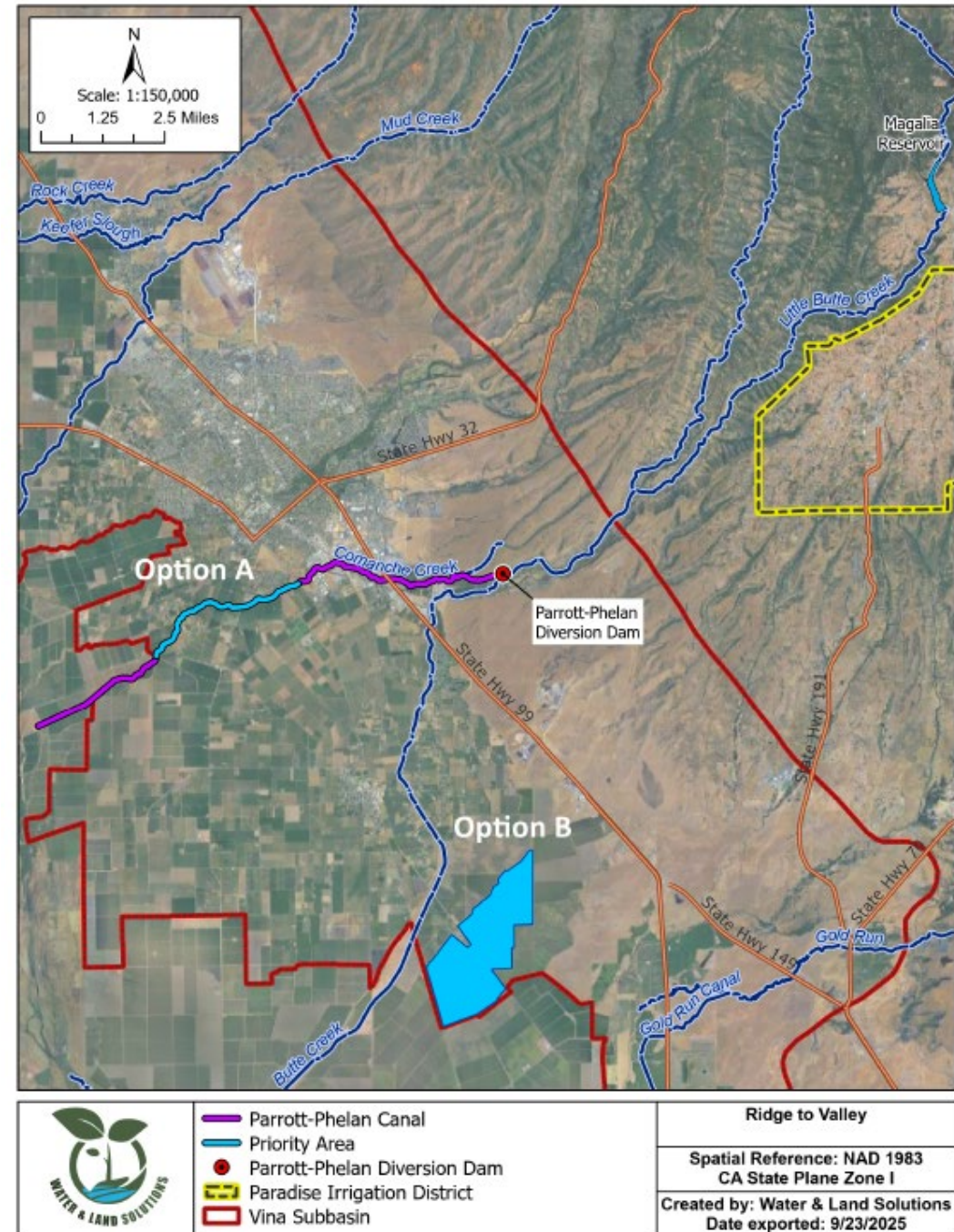
- South Vina Extension
- Ridge to Valley



Ridge to Valley

Convey underutilized Paradise Irrigation District water through Butte Creek to farmland in Vina Subbasin.

1,500 - 3,500 acre-feet (AF)



Legal Considerations

- SWRCB – temporary v long-term transfer
- Court Approval for amendments for Butte Creek adjudication
- CEQA Review

Environmental Considerations

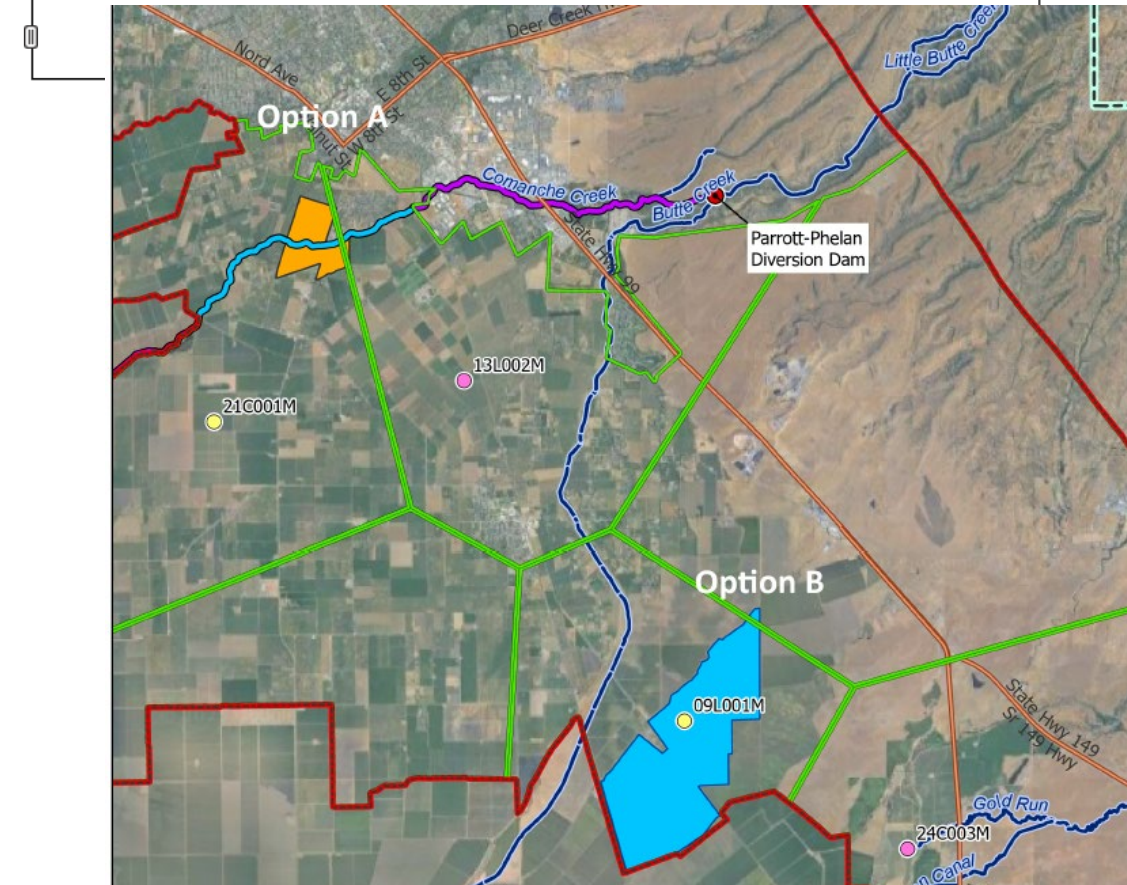
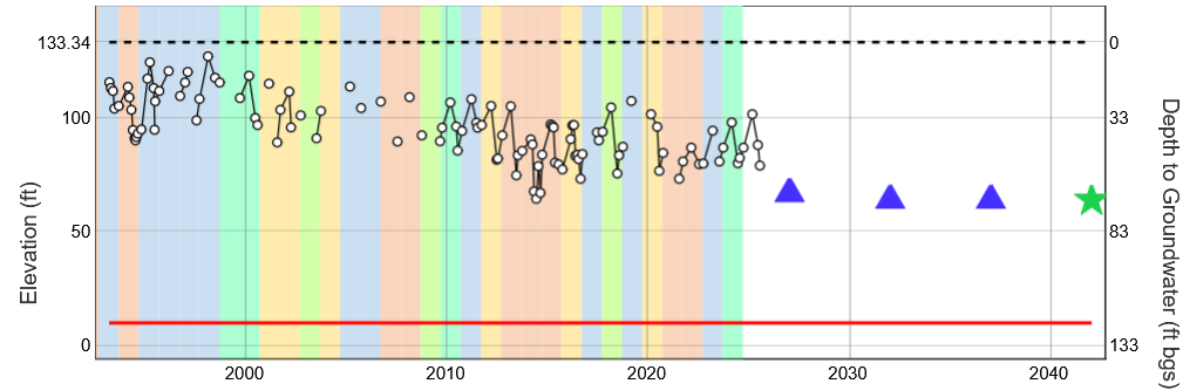
- No known significant negative impacts
- Utilization of an existing water right means water available to watershed will not be reduced
- Potential fishery benefits July – September, when Butte Creek temperature has been identified as a concern for adult spring-run Chinook Salmon.

Groundwater Sustainability

- 21N01E21C001M**
 GW Levels declined 17.2 feet from 2002-2023,
 Average rate: 0.82 ft/yr decline
 Currently above MO, MT, and interim milestones

CDEC Water Year Type (Sacramento)

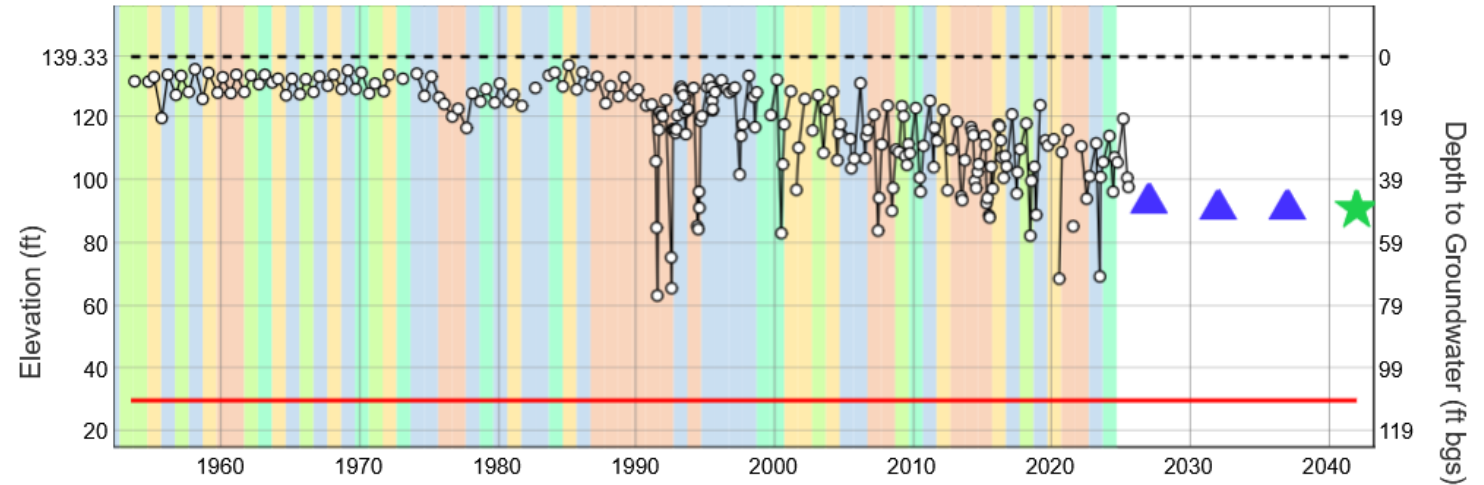
Wet Above Normal Below Normal Dry Critical



Groundwater Sustainability

CDEC Water Year Type (Sacramento)

Wet Above Normal Below Normal Dry Critical



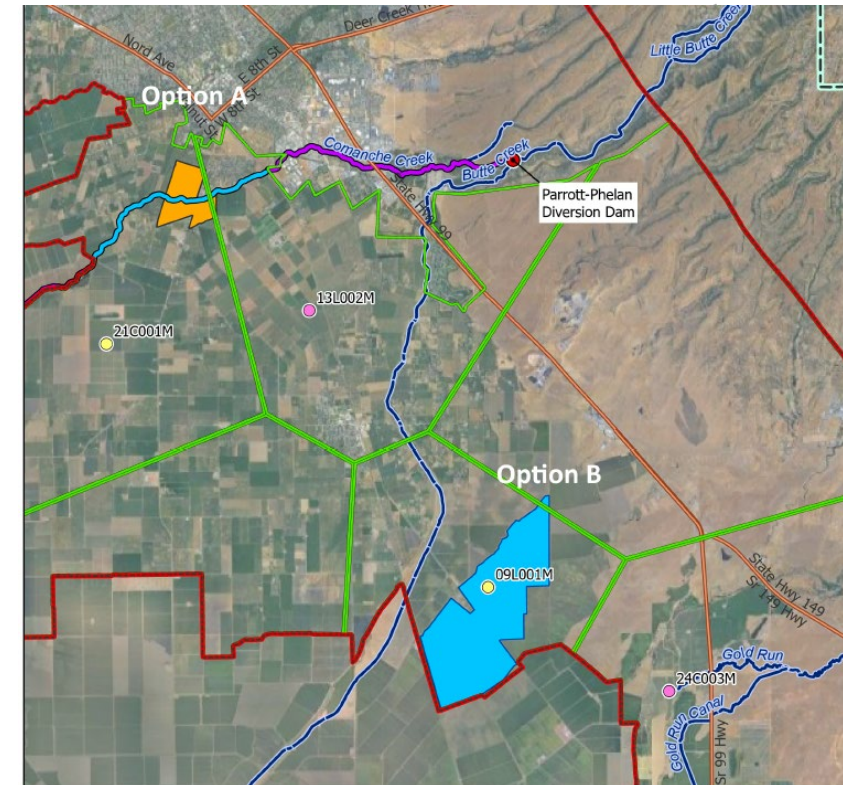
- 20N02E09L001M

GW levels declined 15.35 feet from 2003-2023

Average rate: 0.77 ft/yr decline

Above interim milestone, MO, and MT

Seasonal lows groundwater levels can drop below the MO.



Infrastructure Needs

- Conveyance – existing natural infrastructure
- Diversions – no additional
- Delivery to farm – no additional
- On-farm improvements
 - For option A, up to 3 pump stations with filters, etc needed to create a dual source system for walnuts
 - For option B, no additional improvements needed to flood irrigate rice

Costs & Funding Options

- Cost of water – TBD by PID Board
- Median price here is \$297.50/AF, rounded to \$300/AF
- Additional cost for legal expenses & CEQA
- Option A wheeling cost: \$25/AF

Seller	Buyer/Leasee	\$/AF	Amount (AF)	Year	Location
Glenn Colusa Irrigation District	Sutter Mutual Water Company	\$55.07	20,000	2024	North-of-Delta
Butte County	Del Oro Water Company/Cal Water-Oroville	\$106.70	668	2025	North-of-Delta
Butte County	Palmdale Water District/Westside Districts	\$176.40	24,000	2025	South-of-Delta
Yuba County Water Agency	Healthy River and Landscape Program	\$290	41,000	2025 - 2033	In-Delta
South Sutter Water District	Woodland-Davis Clean Water Authority	\$550	2,000	2024-25	North-of-Delta
Butte Water District	Santa Clara Valley Water District	\$650+	21,000	2025	South-of-Delta
Western Canal Water District	Metropolitan Water District of Southern California	\$600	Up to 26,400	2025	South-of-Delta

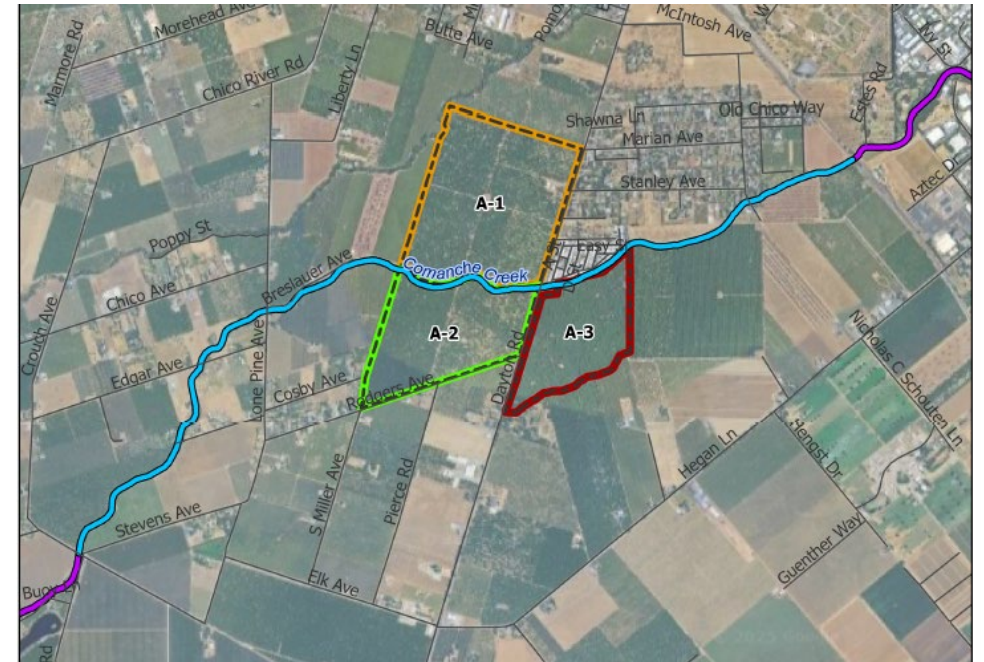
Costs & Funding Options (cont'd)

- On-Farm Improvements – Option A

	Total AF	Annual Capital & Maintenance (\$/AF)
A-1	700	\$45
A-2	400	\$50
A-3	300	\$55

- On-Farm Improvements – Option B

N/A



Costs & Funding Options (cont'd)

- Cost-Benefit

	Total Benefit (AF)	Total Annual Cost per AF Recharge (\$/AF)
A	1,400	\$430/AF
B	3,500	\$300/AF

- Funding options:
 - On-farm improvements: State, Federal, local, private
 - Cost of Water: private and local

Conclusions & Recommendations

1. Adopt a Phased approach:

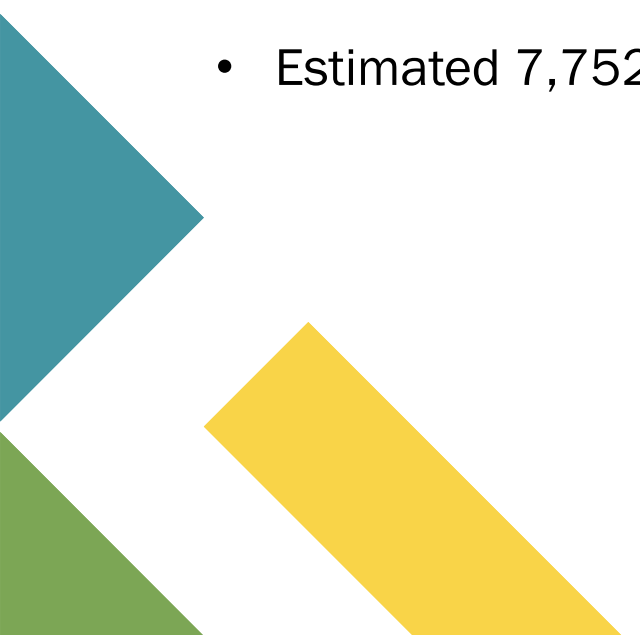
Phase 1: 1,500 AF to Option B for three years, with temporary annual transfers

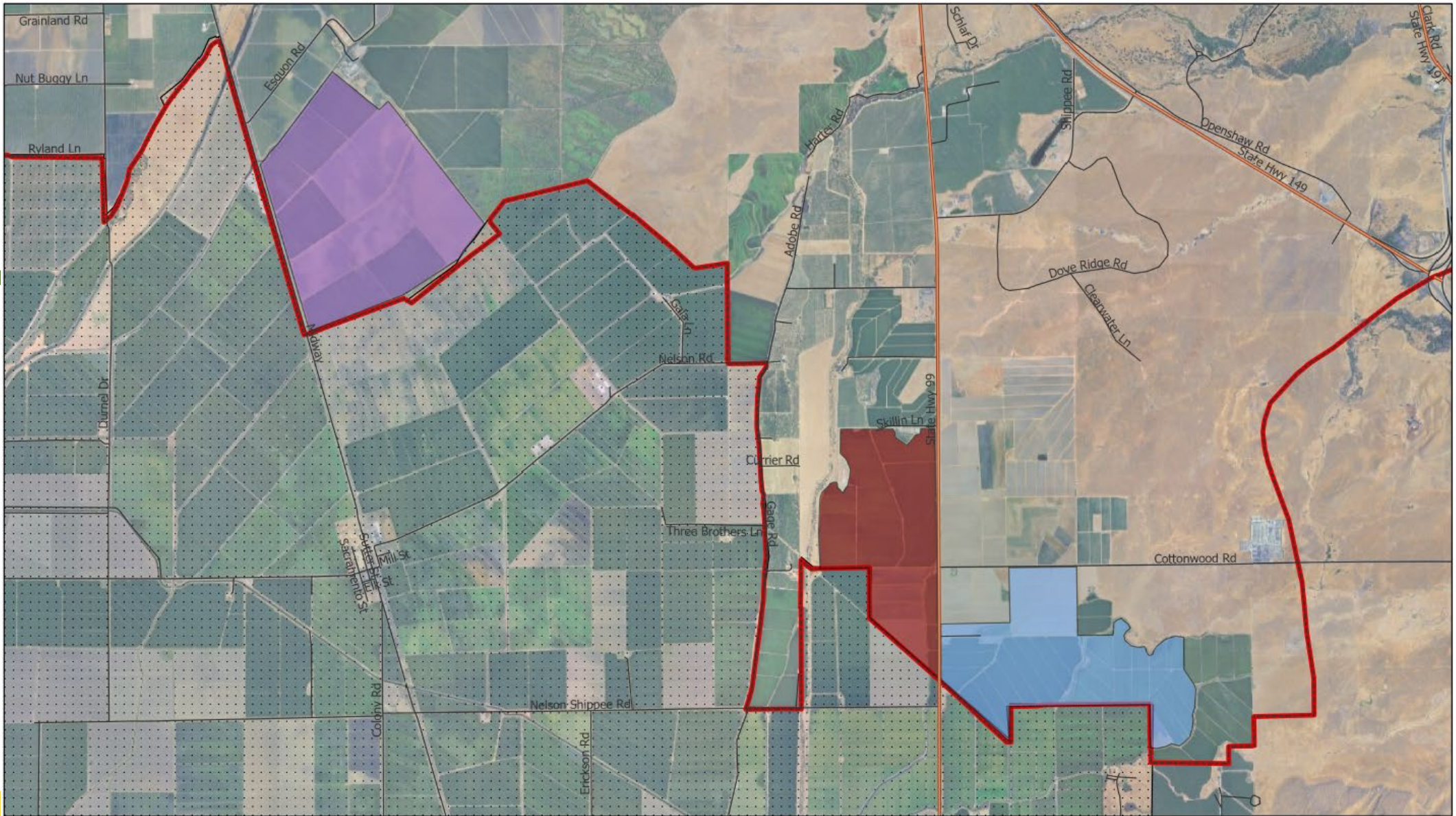
Phase 2: Up to 3,500 AF with a long-term multi-year transfer

2. GSA cost share

3. Focus on Option B

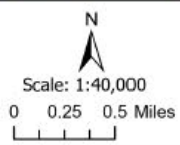
South Vina Extension

- Western Canal Water District deliver water outside their district into Vina Subbasin
 - 2,476 acres of rice across three landowners
 - Estimated 7,752 acre-feet annually
- 



- East Cherokee Strip - 782 acres (1)
- Hamlin Slough - 1052 acres (1)
- West Cherokee Strip - 642 acres (1)

- Western Canal Water District
- Vina Subbasin



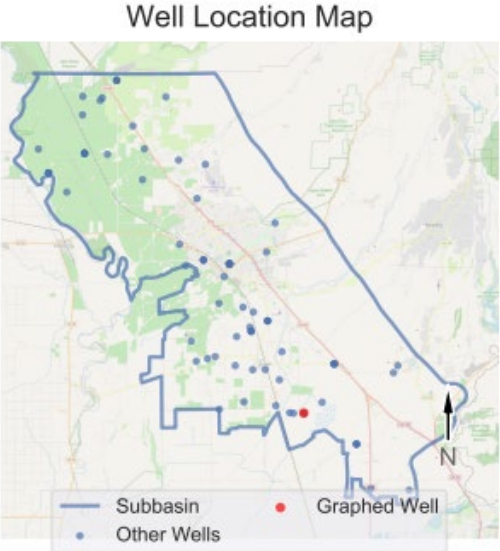
**Vina Subbasin
Surface Water**

Spatial Reference: NAD 1983
CA State Plane Zone II

Created by: Water & Land Solutions
Date exported: 9/11/2025

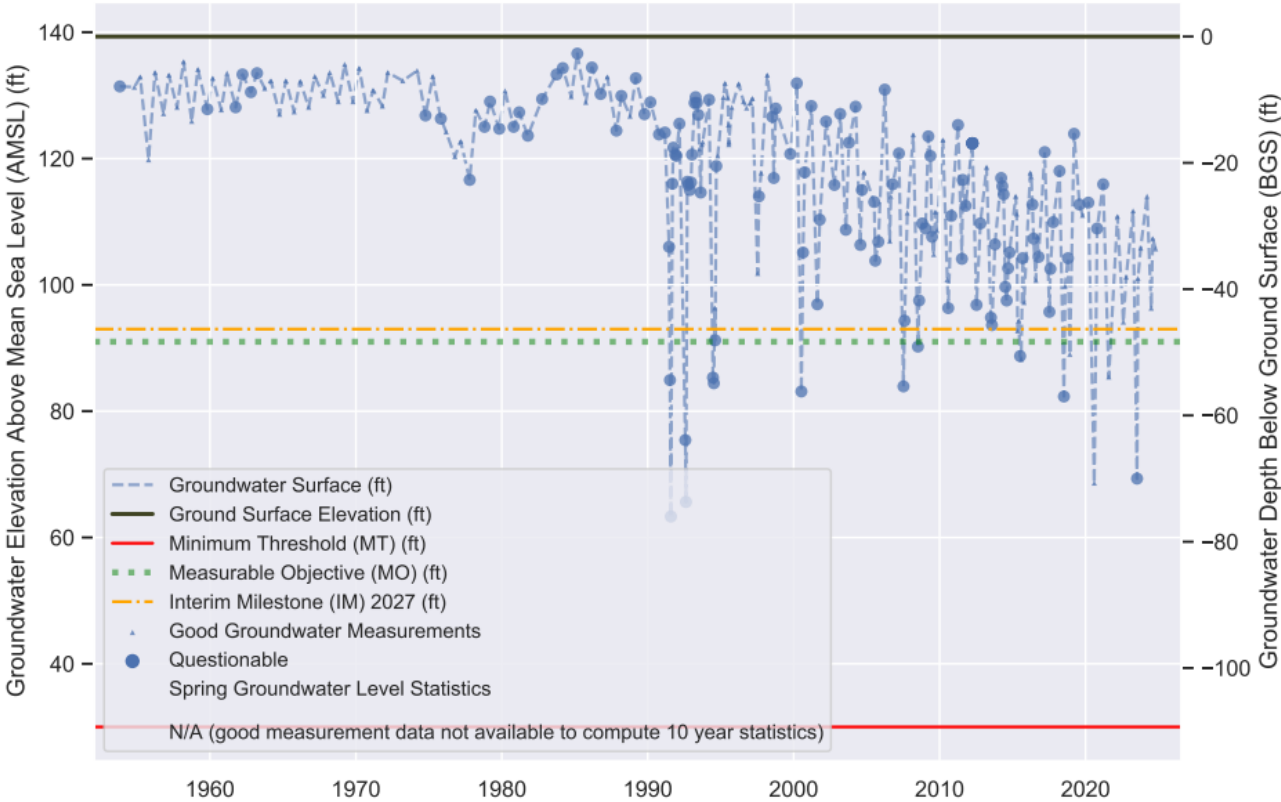
Groundwater Sustainability

- RMS well near Hamlin Slough property



VINA Subbasin - State Well Number (SWN): 20N02E09L001M

Perforation 1: 460.0 - 710.0 ft BGS



Water Availability

- Discussions have been based on a 10-year memorandum of agreement with an annual decision by the Western Canal Water District board on water availability
- Estimate water will be available in 8 in 10 years
- Limited conveyance capacity in July and early August incorporated into 7,752 AF annual estimate

Infrastructure

- 9 new or upgraded lift pumps
- 12 new meters
- Pipe through Cottonwood Creek levee

Legal Considerations

- Permitting required for pipe through Cottonwood Creek levee
 - Central Valley Flood Protection Board
 - U.S. Army Corps of Engineers
 - CEQA
- Additional permitting may be needed for other aspects of Hamlin Slough or Cottonwood Creek projects

Cost Estimates – Upfront Costs

- Draft capital costs for infrastructure, including permitting, design, and construction

Project/Site	Total Estimated Construction Cost	High (+50%)	Low (-25%)	Acre-feet	\$/AF
Cottonwood Creek Culvert	\$917,200	\$1,054,800	\$527,400	55,110	\$ 17
East Cherokee Strip	\$676,800	\$1,015,200	\$507,600	30,260	\$ 22
West Cherokee Strip	\$2,790,500	\$4,185,750	\$2,092,875	24,850	\$112
Hamlin Slough	\$682,700	\$1,024,050	\$512,025	22,410	\$ 30
TOTAL	\$5,067,200	\$7,279,800	\$3,639,900	77,520	

Cost Estimates – Water Cost

- To be determined by Western Canal Water District with project proponents
- Likely higher than current out of district fee of \$14/AF
- Additional wheeling charge for Hamlin Slough project

Thank you

Jenny Scheer

Maddie Munson

mmunson@waterandlandsolutions.com



Groundwater Sustainability Implications



- GSP showed downward trend in groundwater levels
- Groundwater levels are a GSP proxy for storage, subsidence, and interconnected surface waters
- No known in-elastic subsidence
- GSP tracks high calcium, high nitrates and total dissolved solids in the Chico area .
- Seawater intrusion not relevant to Vina