



# PROJECT MEETING VINA SUBBASIN PRIORITY AREAS FOR PMAs AND PMA CRITERIA APRIL 20, 2021

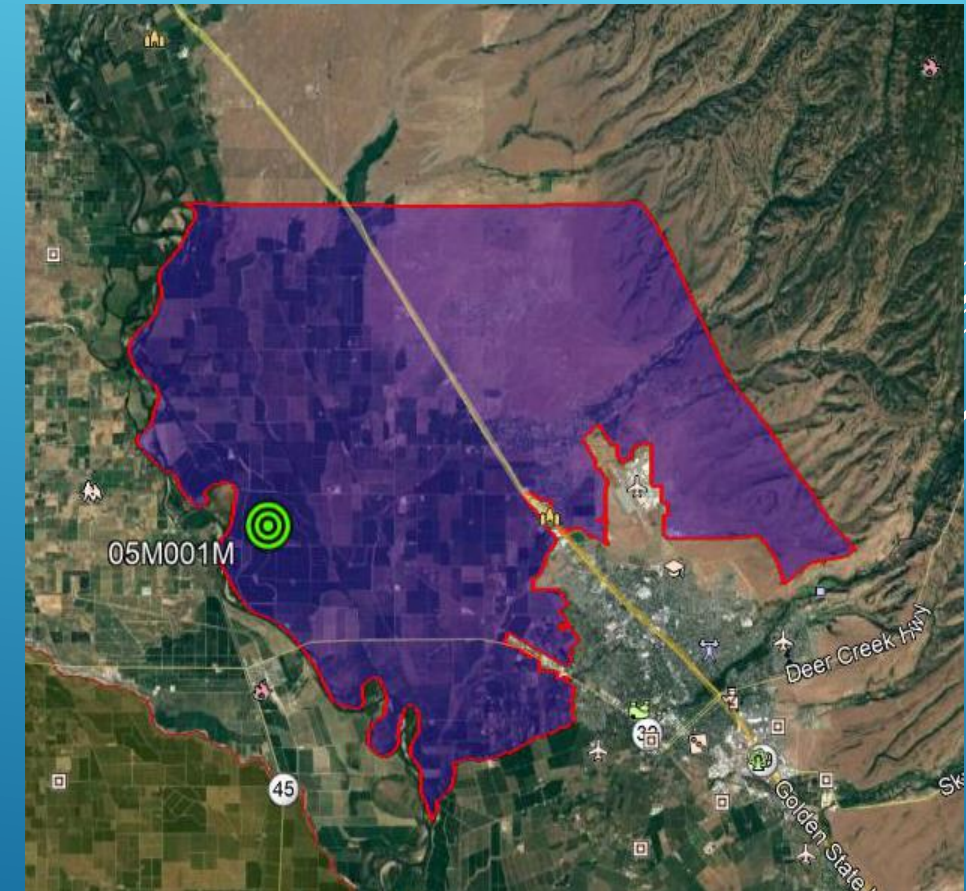
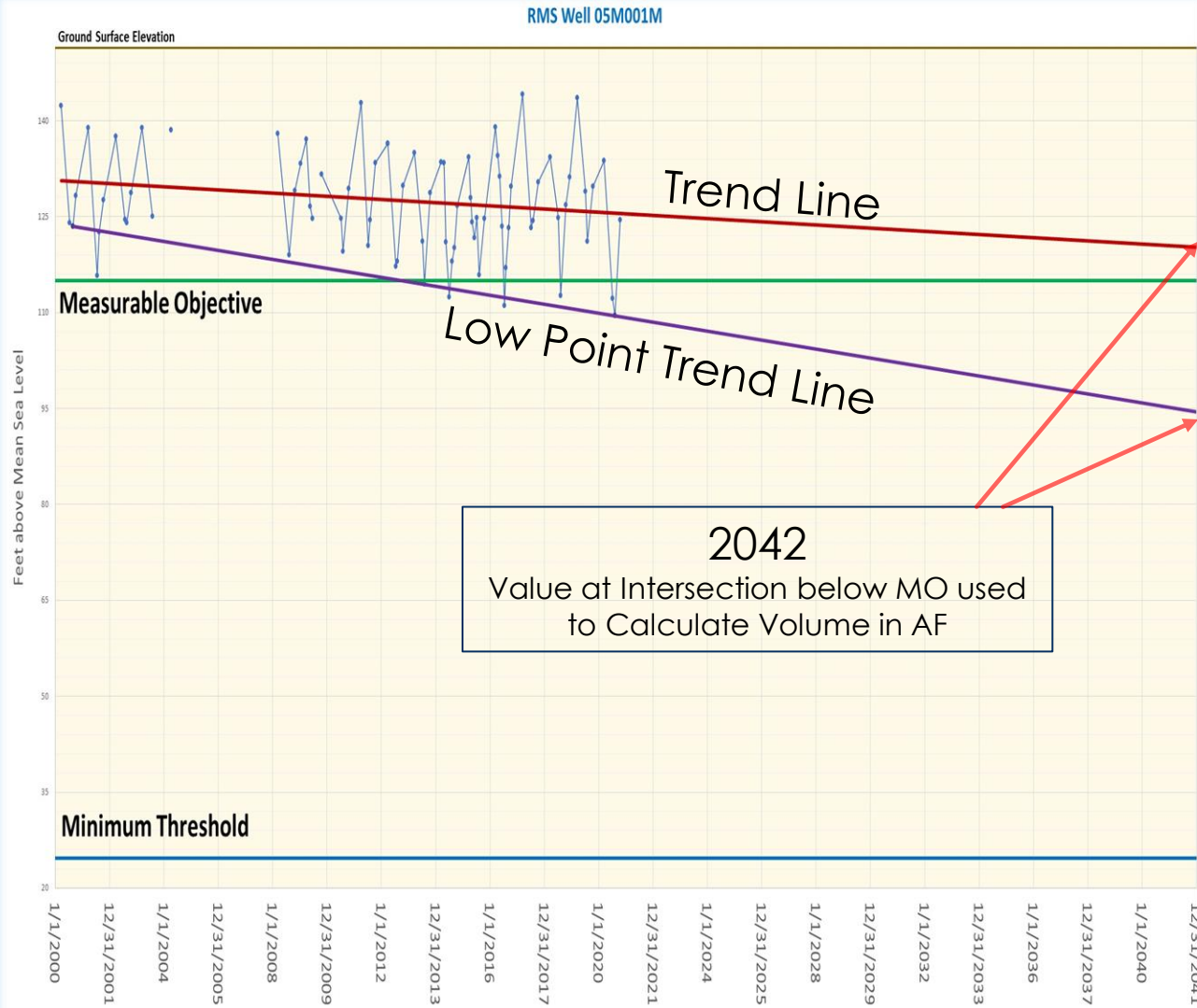


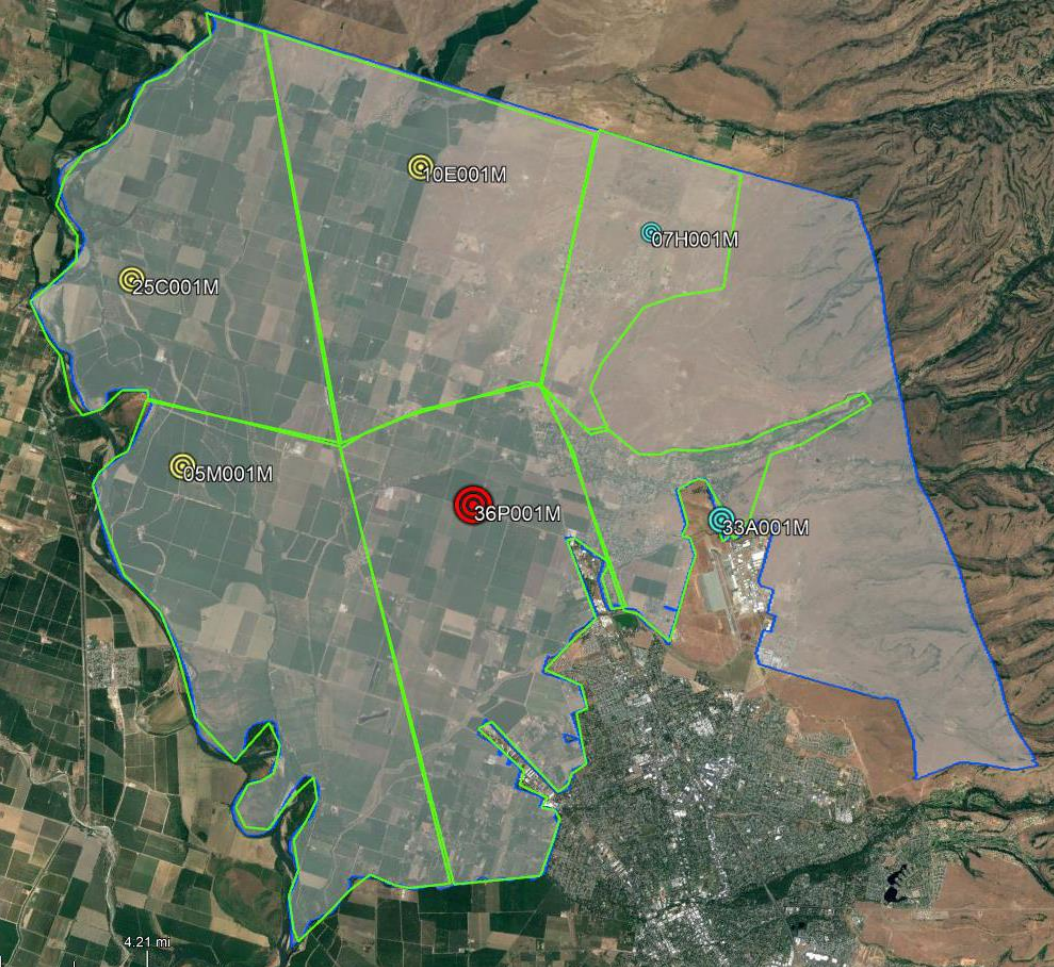
# AGENDA

- ▶ METHODS USED TO PRIORITIZE AREAS
- ▶ VINA NORTH PRIORITY AREAS
- ▶ VINA CHICO PRIORITY AREAS
- ▶ VINA SOUTH PRIORTIY AREAS
- ▶ PMA CRITERIA
- ▶ DISCUSSION



# METHODS TO DEVELOP PRIORITY AREAS FOR PMAS

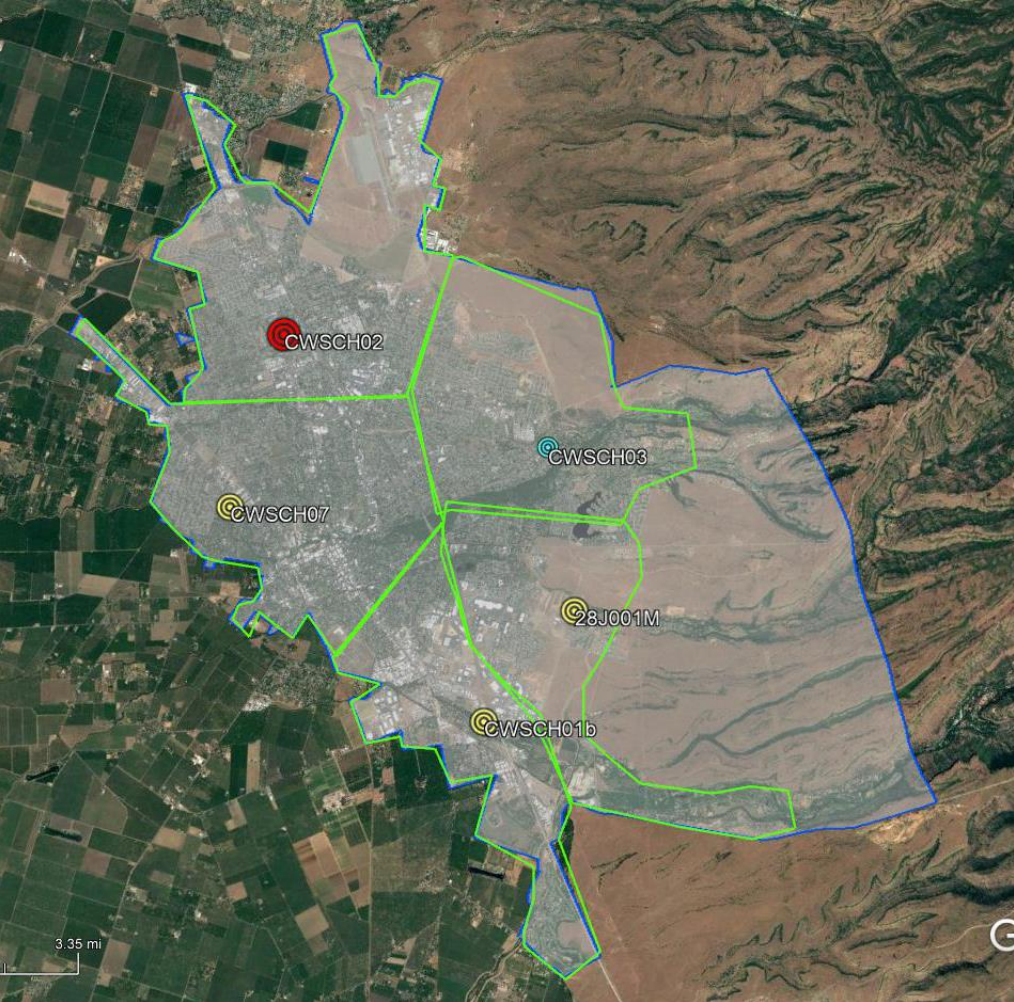




# VINA NORTH

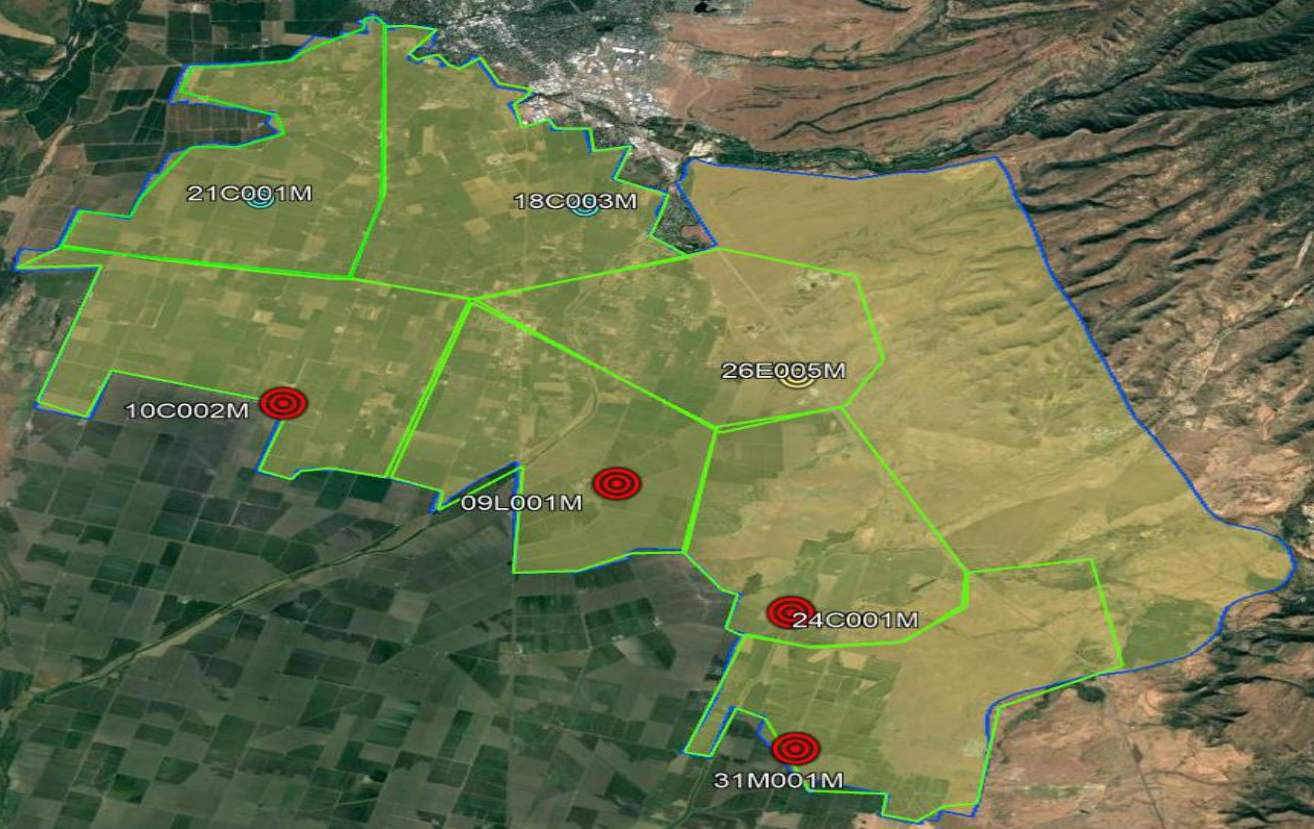
RMS Well I.D.	MO	Feet Below MO in 2042 Trend Line	Feet Below MO in 2042 Low Point Trend Line	Specific Storage	Square Miles	Volume (AF) Trend 2042	Volume (AF) Low Point Trend 2042
36P001M	108	8.49	34.39	0.008	18	782	3,169
05M001M	115	-4.28	19.45	0.008	20.5	-449	2,041
25C001M	130	-0.76	19.31	0.008	18.4	-72	1,819
10E001M	136	-1.08	17.1	0.008	19.7	-109	1,725
33A001M	125	9.71	22.04	0.008	5	249	564
07H001M	136	-26.13	0.93	0.008	6.78	-907	32
					Totals	-506	9,351





# VINA CHICO

RMS Well I.D.	MO	Feet Below MO in 2042 Trend Line	Feet Below MO in 2042 Low Point Trend Line	Specific Storage	Square Miles	Volume (AF) Trend 2042	Volume (AF) Low Point Trend 2042
CWSCH02	105	13.56	31.68	0.008	6.64	461	1,077
CWSCH07	108	1.47	20.39	0.008	7.21	54	753
CWSCH01b	106	9.17	19.04	0.008	5.15	242	502
28J001M	110	3.14	17.18	0.008	5.48	88	482
CWSCH03	108	-0.18	14.86	0.008	6.64	-6	505
					Totals	839	3,319



# VINA SOUTH

RMS Well I.D.	MO	Feet Below MO in 2042 Trend Line	Feet Below MO in 2042 Low Point Trend Line	Specific Storage	Square Miles	Volume (AF) Trend 2042	Volume (AF) Low Point Trend 2042
10C002M	92	12.94	30.98	0.008	15.6	1,034	2,474
09L001M	91	-2.45	29.19	0.008	13.6	-171	2,033
31M001M	82	1.42	25.96	0.008	14.5	105	1,927
24C001M	77	4.92	27.82	0.008	12.7	320	1,809
18C003M	130	-	20.18	0.008	14.5	-	1,498
26E005M	95	-7.98	17.93	0.008	12.4	-507	1,138
21C001M	64	-0.37	13.43	0.008	12.5	-24	860
					Totals	758	11,739

PAUSE

# PMA CRITERIA



# PROJECT CRITERIA INITIAL ASSESSMENT

1. Project addresses one or more of the Undesirable Results
2. Project is implementable with respect to technical complexity, regulatory complexity, institutional consideration, and public acceptance
3. Project is implementable within the SGMA timeframe
4. Project benefits Underrepresented Communities (URCs)
5. Project has an identified Funding Source
6. Project is located in an area where water quality is suitable for use

# PROJECT CATEGORIES

**Planned Projects** – Projects planned to be operational prior to 2042 and the projected supply is considered as offsetting the projected 2042 supply imbalance.

**Potential Projects** – Projects in the planning stages and are likely to move forward when funding becomes available. Potential Projects represent a “menu of options” for the Subbasin to achieve long term sustainability and offset the remaining imbalance above

**Conceptual Projects** – Projects in the early conceptual planning stages requiring additional work to implement.

Several white lines of varying lengths and angles are positioned in the bottom right corner of the slide, creating a modern, abstract graphic element.



# REQUIREMENTS FOR EACH PROJECT

- The benefitted measurable objective
  - Expected benefits
  - How the project will be accomplished
  - Legal authority
  - Time-table for initiation and completion
  - Permitting and regulatory processes
  - Estimated costs and plans to meet costs
  - Public outreach
- 
- Several white lines of varying lengths and slopes are positioned in the bottom right corner of the slide, creating a modern, abstract graphic element.

# PROJECTS & MANAGEMENT ACTIONS



## ► Management Actions

- Update existing well ordinances
- Policies to encourage projects
- Credits for recharge facilities
- Credits for on-farm recharge
- Credits for fallowing
- Encouraging pumping outside of designated areas or depths
- Encourage conservation efforts
- Protect riparian and stream corridors

For discussion only. Not intended to represent PMAs that will be advanced for analysis





## Project Evaluation Criteria

Which SMCs will be addressed  
Project Viability



## Continue to identify Projects

Water Purveyors & Others  
PMA Submittal Form



## Identify Management Actions

Include in GSP

# NEXT STEPS

THANK YOU