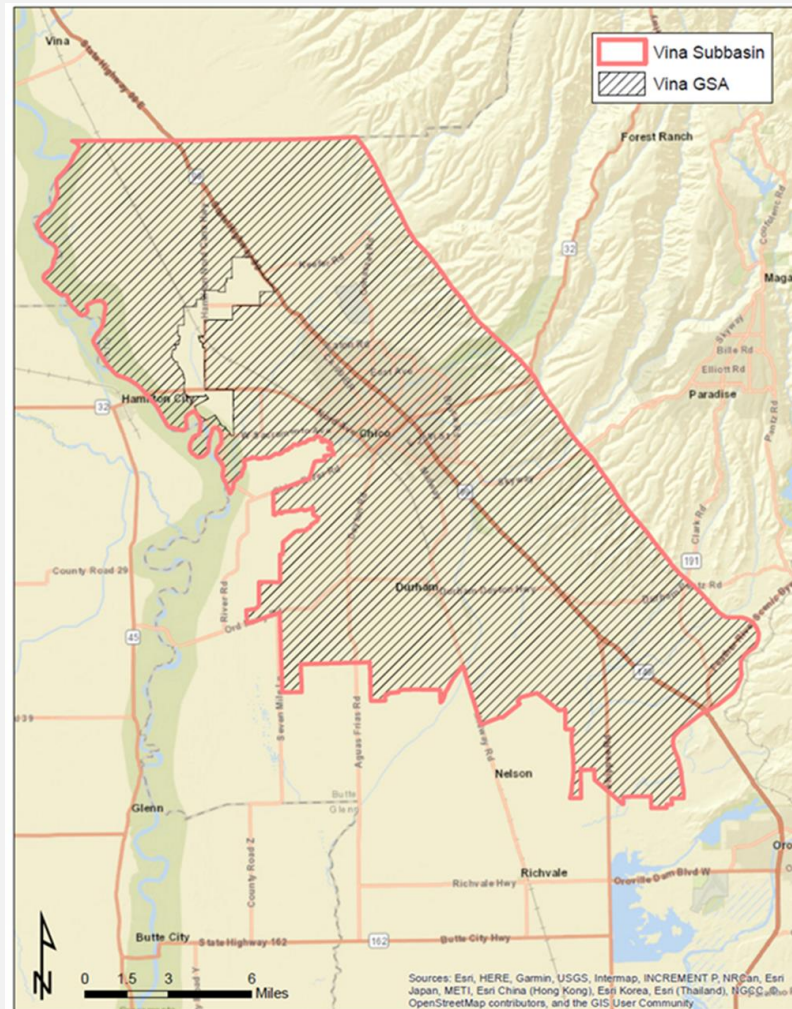


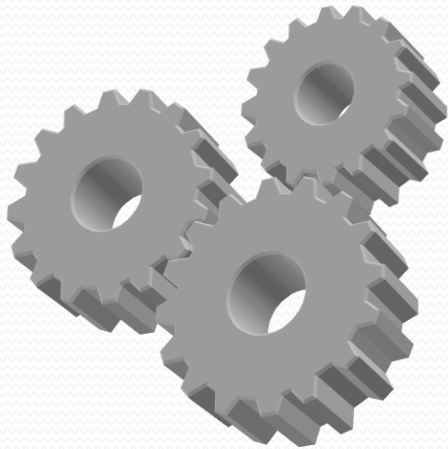


Sustainable Groundwater Management Act





Sustainable Groundwater Management Act



*Legislative
Framework*



Sustainable Groundwater Management Act

Legislative Package

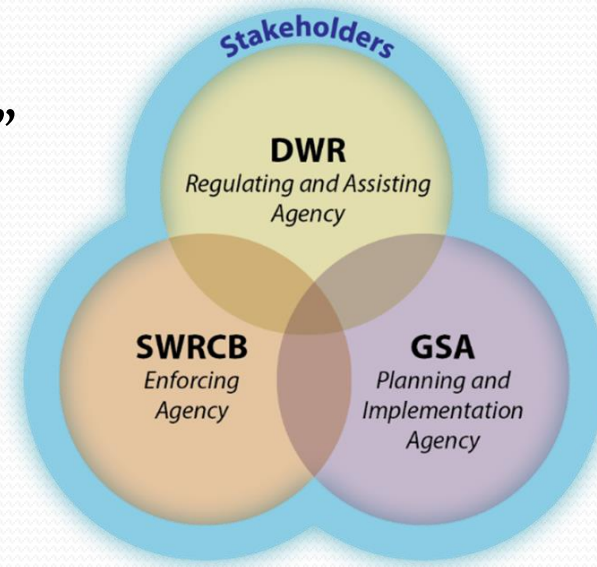
- Package of bills (SB 1168, AB 1739, SB 1319)
 - Effective January 1, 2015
- Local control is a hallmark of SGMA
- 127 groundwater basins statewide must comply
- Sustainability must be achieved within 20 years
- Requirement to manage groundwater under a Groundwater Sustainability Plan (GSP)



Sustainable Groundwater Management Act

Overarching Concepts

- **Local Management**
 - “Groundwater Sustainability Agencies”
- **Groundwater Sustainability Plans**
 - Regulatory Targets
 - Sustainability in 20 years
- **State Technical Support and Regulatory Standards**
- **State Oversight/Intervention**





Sustainable Groundwater Management Act

State Role - DWR

➤ Basin Priorities

- Basin Adjustments
- Basins in Critical Overdraft

➤ Regulations

- Groundwater Sustainability Plan components
- Basin boundary adjustment procedures
- Basin assessment methodologies
- Alternative compliance



Sustainable Groundwater Management Act

State Role - DWR

➤ Technical Assistance

- Best management practices for sustainable groundwater management
- Financial Assistance - Propositions 1 & 68
- Technical Support Services

➤ Assessment of Groundwater Sustainability Plans

- Initially within 2 years and every 5 years
- Assess the impact of a GSP on an adjacent basin >> interbasin sustainability
- Corrective actions for deficiencies



Sustainable Groundwater Management Act

State Role – State Water Resources Control Board

- Intervention – “Probationary basins” if
 - No GSA by **June 30, 2017**
 - No GSP by **January 31, 2022** for all high and medium priority basins
 - Inadequate GSP or failure to implement a GSP
- Remediation – **180 days**
- Interim Plan, Reporting and Enforcement
- Fees



Sustainable Groundwater Management Act

Water Management and Land Use

➤ **Required Collaboration**

- Land Use Agencies (General Plans)
- Groundwater Sustainability Agencies (Groundwater Sustainability Plans)

➤ **County authorities**

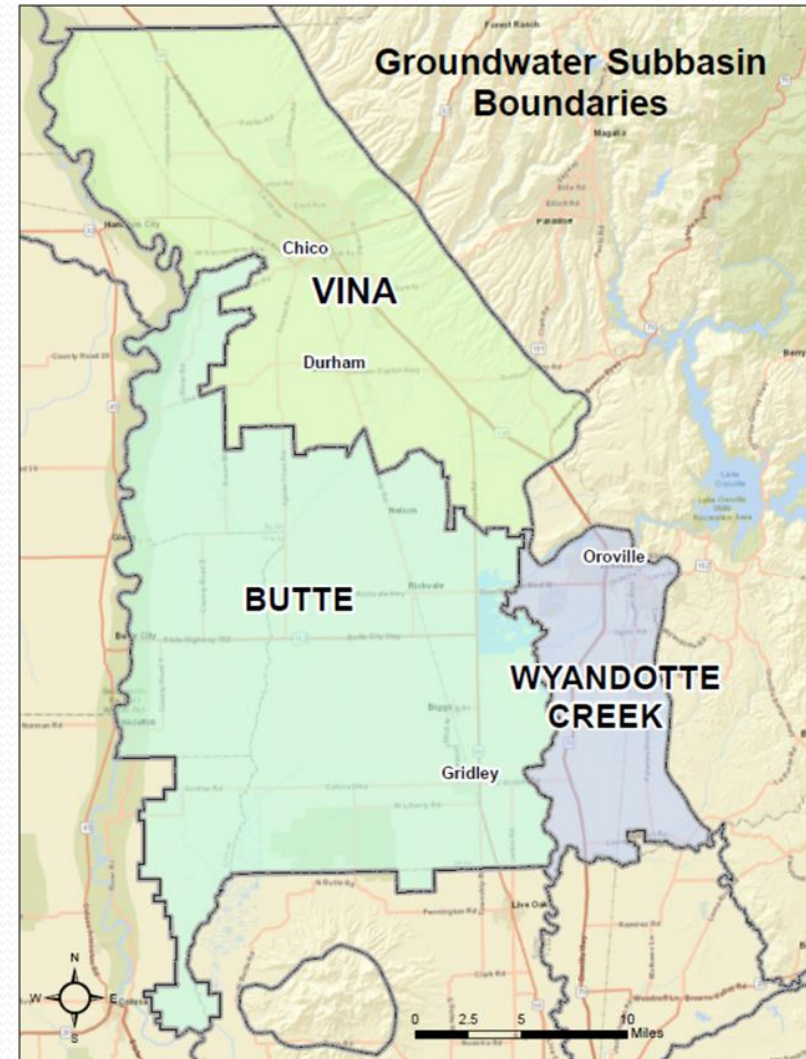
- Well permitting
- Police powers to manage groundwater (i.e., Chapter 33)
- Land use



Sustainable Groundwater Management Act

Applicability/Geographic Scope

- **Bulletin 118 subbasins**
 - Priority of high and medium CASGEM basins
- **Basin Boundaries Adjustment Process**





Sustainable Groundwater Management Act

Groundwater Sustainability Agency (GSA)

- Groundwater Sustainability Agency (GSA)
 - “Local Agencies” – public agency with **water** or **land use** authority
 - Counties presumed to be responsible for areas outside of water district boundaries
- By **June 30, 2017**, agencies notified DWR of intent to be a GSA
- Responsible for developing and implementing the Groundwater Sustainability Plan
- GSA may be made formed from more than one local agency >>> Vina GSA



Sustainable Groundwater Management Act

Groundwater Sustainability Plans

- **Deadline - January 31, 2022**
- **Exempt from CEQA**
- **Types of Plans**
 - **Single Plan/One GSA**
 - **Single Plan/Multiple GSAs**
 - **Multiple Plans/Multiple GSA**
 - **Must cover the entire basin**
- **Vina will have 1 Plan**



Sustainable Groundwater Management Act

Groundwater Sustainability Plans

Components

- **General Plan linkage**
- **Water budget – 50 year planning horizon**
- **Sustainable Criteria**
- **Projects and Actions**
- **Sustainability in 20 years**
- **Interim milestones – 5 year increments**



Sustainable Groundwater Management Act

Groundwater Sustainability Plans

1. Administrative Information

- §354.4. General Information
- §354.6. Agency Information
- §354.8. Description of Plan Area
- §354.10. Notice & Communication

2. Basin Setting

- §354.14. Hydrogeologic Conceptual Model
- §354.16. Groundwater Conditions
- §354.18. Water Budget
- §354.20. Management Areas

3. Sustainable Management Criteria

- §354.24. Sustainability Goal
- §354.26. Undesirable Results
- §354.28. Minimum Thresholds
- §354.30. Measurable Objectives

4. Monitoring Networks

- §354.34. Monitoring Network
- §354.36. Representative Monitoring
- §354.38. Assessment & Improvement
- §354.40. Reporting Monitoring Data to the Department

5. Projects and Management Actions

- §354.44. Projects & Management Actions

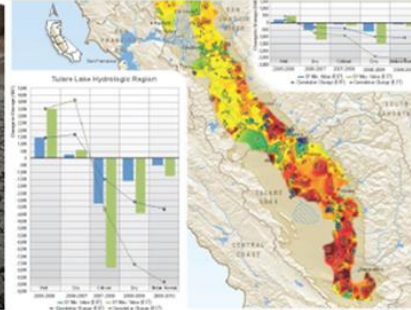


Sustainable Groundwater Management Act

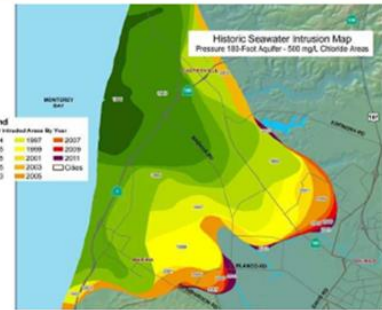
Undesirable Results



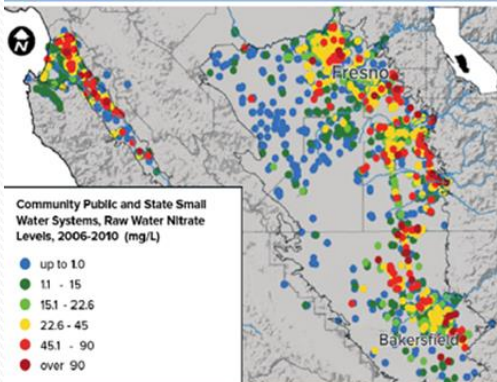
Lowering of GW Levels



Reduction
of GW Storage



Seawater Intrusion



Water Quality Degradation



Land Subsidence



Depletion of
Interconnected Streams



Sustainable Groundwater Management Act

Groundwater Sustainability Plans

Compliance Tools (Discretionary)

- Investigations
- Well extraction limits
- Well permit restrictions
- Well metering/reporting
- Water management projects (e.g. Recharge)
- Land use



Sustainable Groundwater Management Act

Groundwater Sustainability Plans

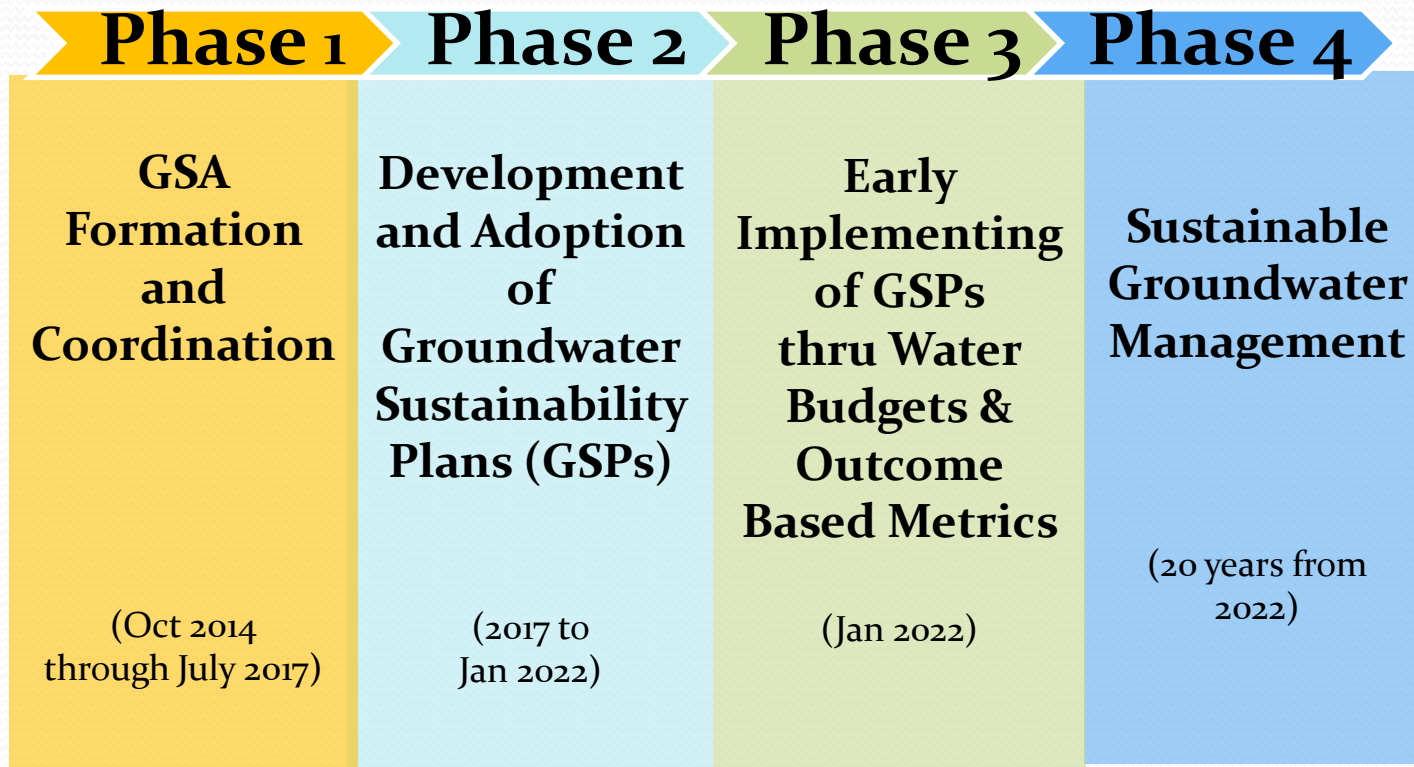
- **Reporting**
 - Annual reports – April 1st
 - Interim Benchmarks – every 5 years – initial 2027
- **Fees (subject to Prop 218)**
- **Enforcement Authority**



Background

2014-2017

Sustainable Groundwater Management Act





Sustainable Groundwater Management Act

What's Next for the Groundwater Sustainability Plan

- *Basin Setting – Fall 2019*
- *Sustainable Criteria 2020-2022*
- *Submit by January 30, 2022*
- *Sustainability 2022-2042*





Sustainable Groundwater Management Act

Thank you