

Vina Groundwater Subbasin Approach to GSA Funding

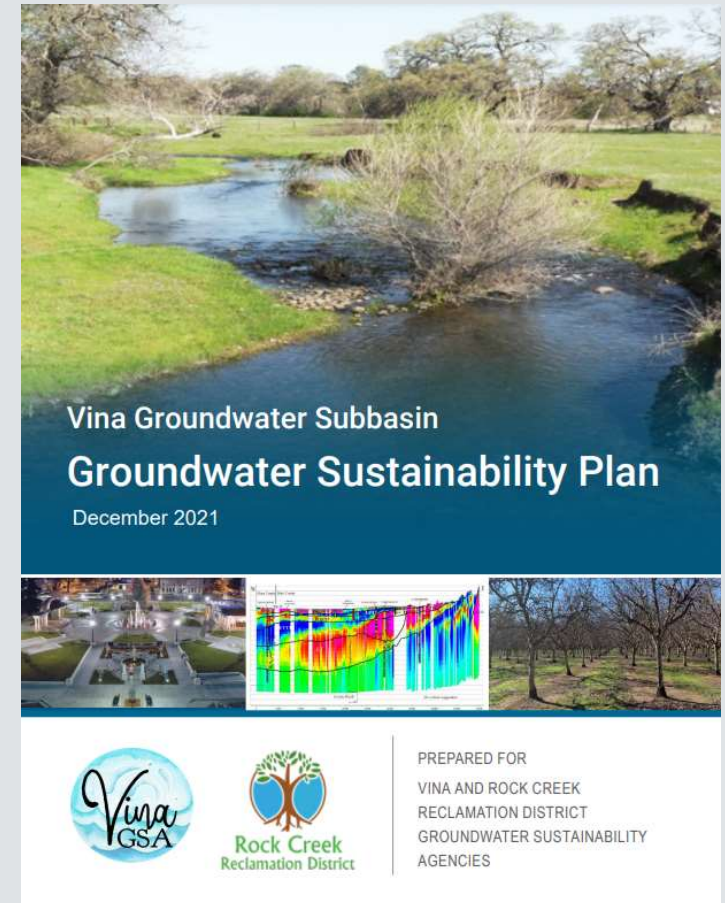


May 25, 2022

Presented by: Brian Ehlers, PE and Joe Hopkins, PE

OUTLINE

- Introduction
- Vina Understanding
- Approach to funding
 - State Intervention, Member Agency, or 218
- What is Prop 218
 - Fee vs Assessment
- Examples
- Process/ Next Steps



WHO IS PROVOST & PRITCHARD?

SPECIALIZING IN

SGMA planning & implementation

Infrastructure rehabilitation

Conveyance system design

Managed aquifer recharge

Proposition 218 elections

Groundwater banking

District modernization

OUR SERVICES INCLUDE

Water resources engineering & planning

Groundwater consulting & data analysis

Construction management

CEQA / NEPA compliance

Biological consulting

Hydrogeology

Grant writing

GIS

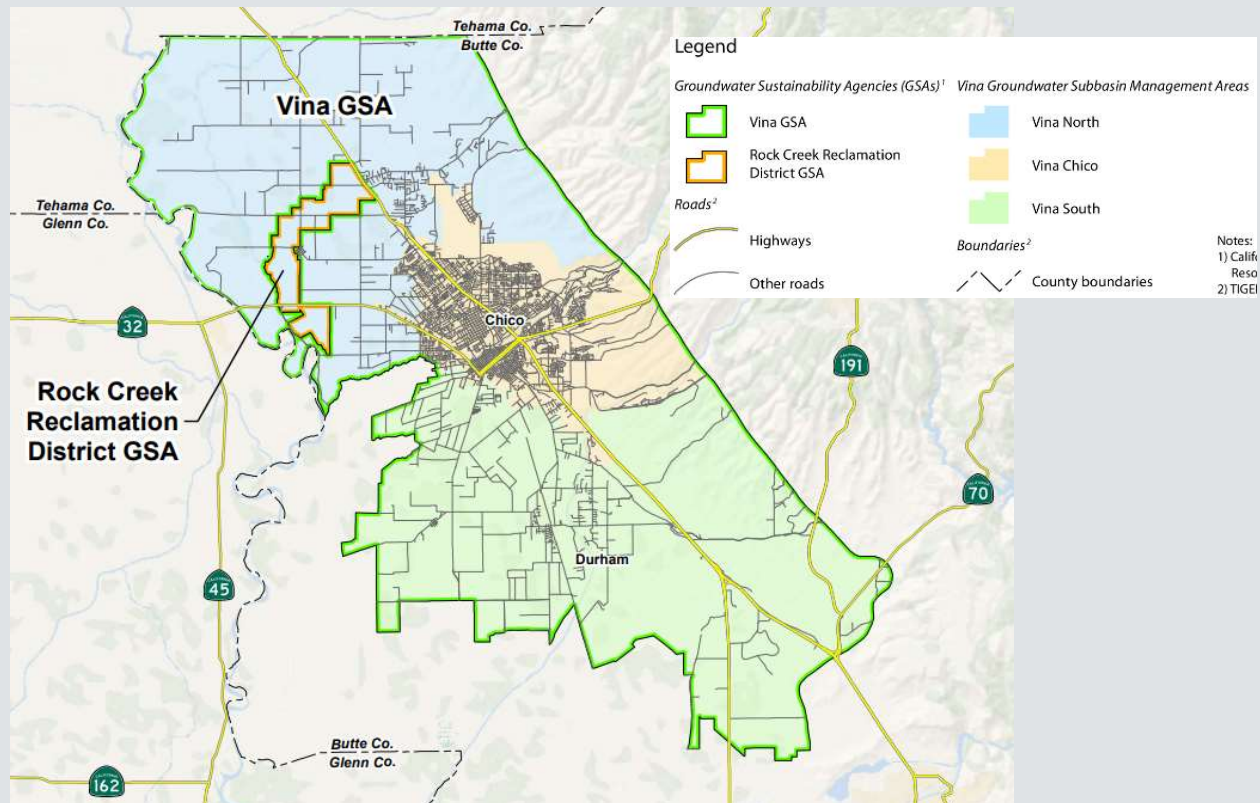


VINA UNDERSTANDING

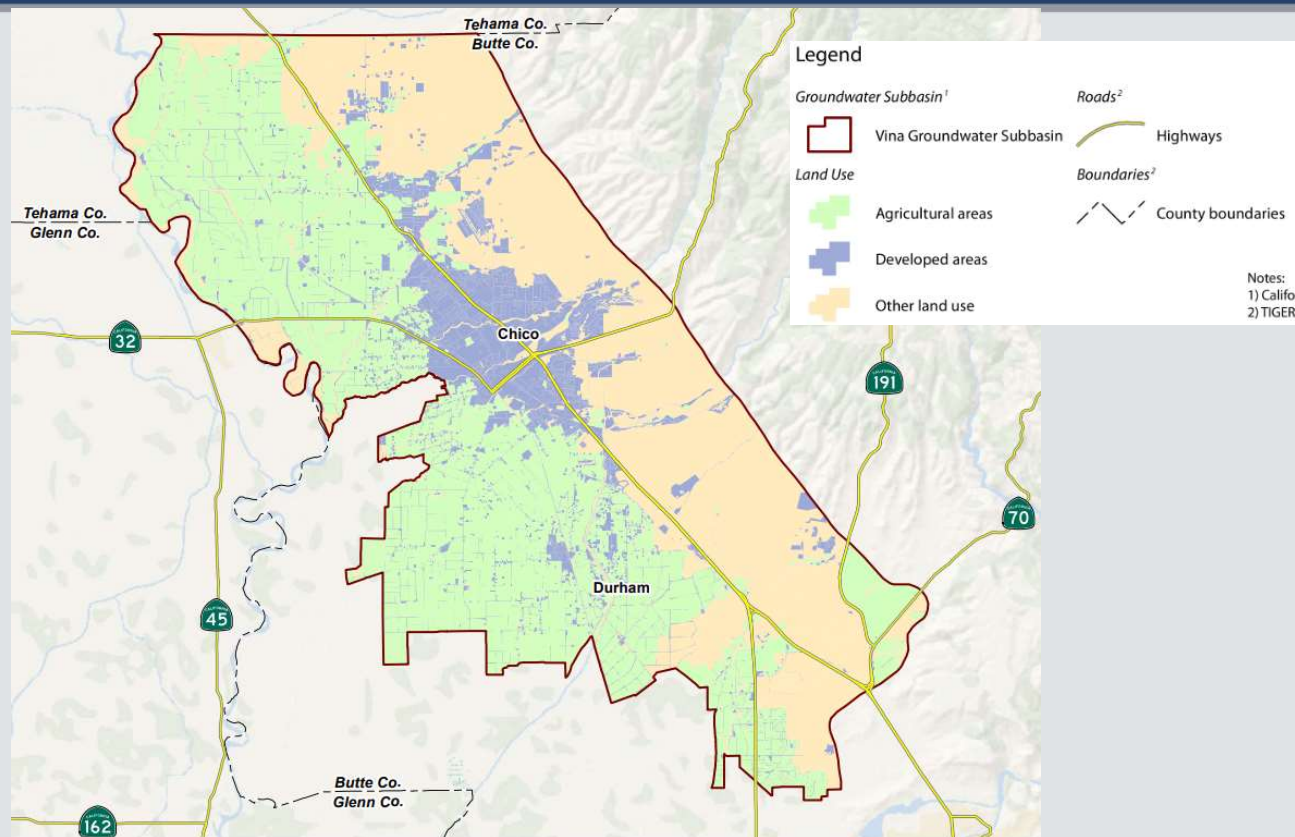
- 2 GSA/ 1 GSP
- GSP submitted 1/28/2022
- 184,000 Acres
- Operations/Admin Costs
 - Admin: ~\$300,000/yr
 - Monitoring: ~\$30,000/yr
 - Data Analysis: ~\$10,000/yr
 - Reporting: ~\$30,000/yr
 - GSP 5-year Update: ~\$100,000
 - Filling Data Gaps: ~\$500,000
- Project Costs TBD



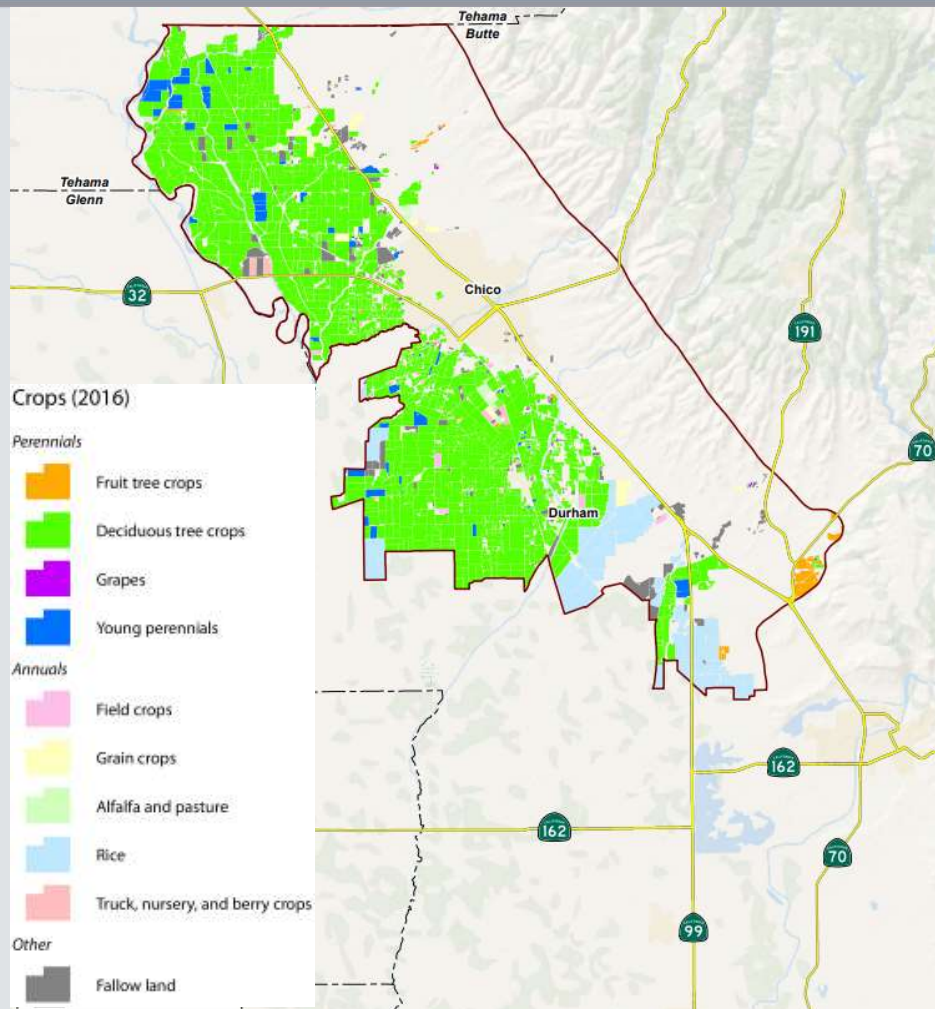
VINA UNDERSTANDING



VINA UNDERSTANDING



VINA UNDERSTANDING



APPROACH TO FUNDING

- SGMA has created an unfunded administrative burden
 - If not funded locally, the State will step in
- Options
 - State Intervention
 - Cost Share per GSA Member
 - Prop 218 allows local agencies to generate revenue
 - Fee
 - Assessment

STATE INTERVENTION

| FEE CATEGORY | FEE AMOUNT | APPLICABLE PARTIES |
|-------------------------|--|---|
| Base Filing Fee | \$300 per well | All extractors required to report |
| Unmanaged Area Rate | \$10 per acre-foot, if metered \$25 per acre-foot, if unmetered | Extractors in unmanaged areas |
| Probationary Basin Rate | \$40 per acre-foot | Extractors in probationary basins |
| Interim Plan Rate | \$55 per acre-foot | Extractors in probationary basins where the Board determines an interim plan is required. |
| De minimis Fee | \$100 per well | Parties that extract, for domestic purposes, two acre-feet or less per year from a probationary basin, If the Board decides the extractions will likely be significant. |
| Late Fee | 25% of total fee amount per month late | Extractors that do not file reports by the due date. |

https://www.waterboards.ca.gov/water_issues/programs/sgma/reporting_and_fees.html

STATE INTERVENTION

- Sample Annual Fee Comparison

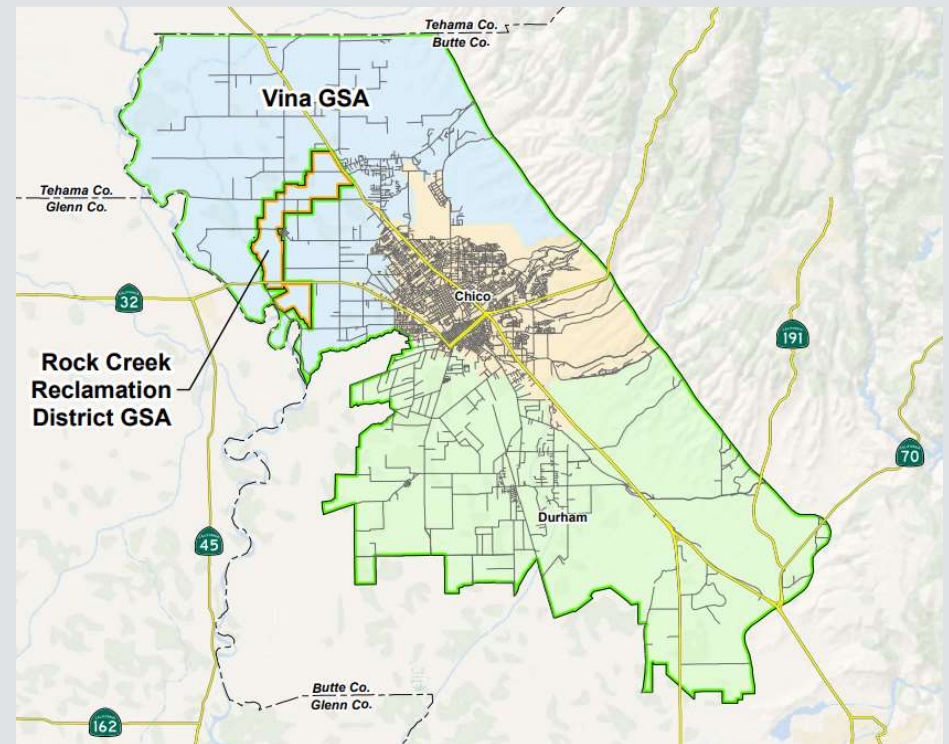
100 acre irrigated parcel with one well, probationary basin

— SWRCB Fees:

- 1 well = \$300
- $3.5 \text{ AF/ac} = 350 \text{ AF} \times \$40 = \$14,000$
- TOTAL: \$14,300

GSA Member Funded

- Split cost equitably among member
- Develop cost share agreement for member agencies
- Member agencies responsible to incorporate into their budgets and fund as they see fit



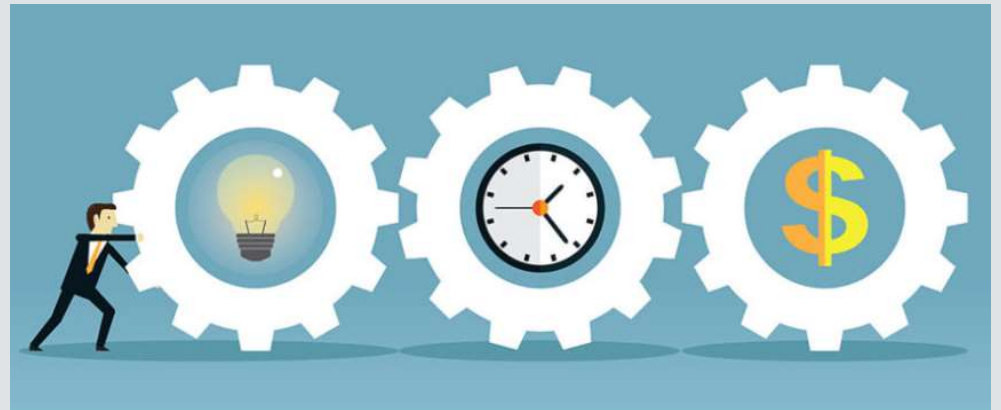
PROP 218 - FEE VS ASSESSMENT

- Fee
 - Variable income based on use/user (e.g. \$/AF)
 - Majority Protest of all users
 - Fund Projects
- Assessment
 - Fixed Income (e.g. \$/Ac)
 - Majority in Favor of ballots received
 - Fund Operations/Administration



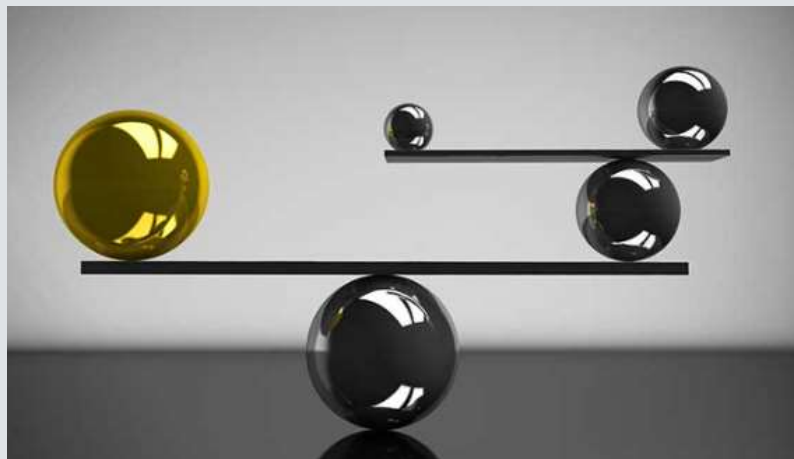
PROCESS

- Identify a working group
- Develop a budget (5-year)
- Determine how to share the cost
 - cost share per agency (no 218)
 - Each agency determines how to charge their landowners
 - Charge landowners directly (218)
 - GSA charges landowners
- If landowner charge, then:
 - Determine if fee or assessment
 - Determine equitable structure
 - Include outreach and workshops
 - Prepare Engineers Report
 - Public notice and vote



FAIR AND EQUITABLE

- How to Split the cost
 - Everyone Pay the same
 - Weight on factors
 - Dependence on groundwater
 - Impact on overdraft
 - Land use
 - Crop type
 - Industry served
- Exemptions
 - De minimus pumpers
 - Small Parcels
 - Federal Lands
 - Disadvantaged Communities

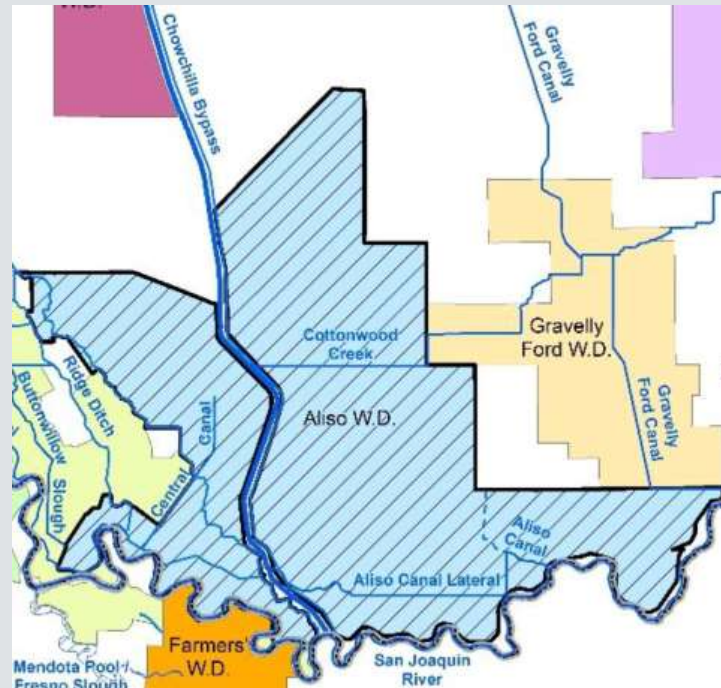


EXAMPLES

- There is no one approach
 - It depends on local factors
- Aliso Water District GSA
- Tri-County Water Authority GSA
- Merced Subbasin GSA

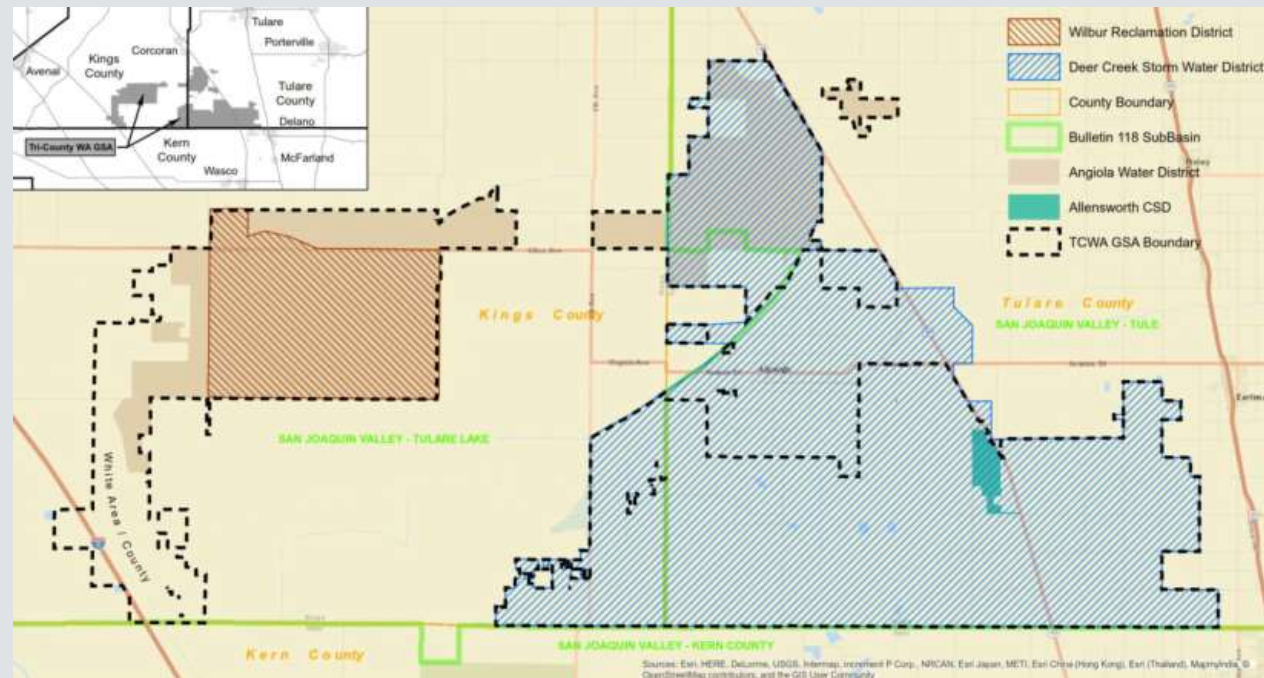
EXAMPLES

- Aliso Water District GSA
 - 1 District/ 1 GSA, purely agriculture, Assessment



EXAMPLES

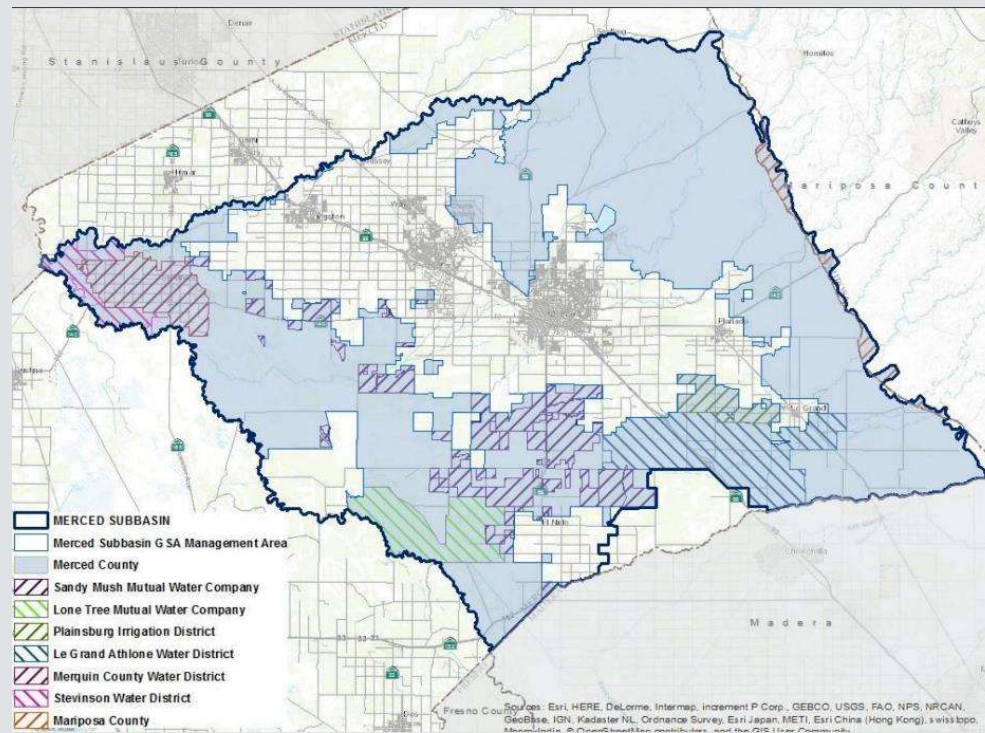
- Tri-County Water Authority GSA
 - 1 GSA/Multiple Agencies, Multiple Subbasins, Assessment



EXAMPLES

- Merced Subbasin GSA

- 1 GSA/Multiple Agencies,
- Fee



PROCESS

- Identify a working group
- Develop a budget (5-year)
- Determine how to share the cost
 - cost share per agency (no 218)
 - Each agency determines how to charge their landowners
 - Charge landowners directly (218)
 - GSA charges landowners
- If landowner charge, then:
 - Determine if fee or assessment
 - Determine equitable structure
 - Include outreach and workshops
 - Prepare Engineers Report
 - Public notice and vote
- Schedule
 - 6 months for a vote
 - 12 months until money in hand

Questions

- Brian Ehlers, PE
 - behlers@ppeng.com
 - 559-449-2700
- Joe Hopkins, PE
 - jhopkins@ppeng.com
 - 559-449-2700

PROVOST & PRITCHARD
CONSULTING GROUP