

Vina Subbasin: Groundwater Management Factsheet

Overview

The Sustainable Groundwater Management Act (SGMA), passed in the fall of 2014, establishes a new structure for managing groundwater resources in California. Groundwater basins and subbasins are defined in the Department of Water Resources (DWR) Bulletin 118 document. SGMA requires Groundwater Sustainability Agencies (GSAs) to manage groundwater at the local level through the development and implementation of Groundwater Sustainability Plans (GSPs). The GSPs must ensure sustainable conditions by 2042 while avoiding six distinct undesirable results. The decisions about sustainability will be made locally through public involvement.



Lowering
GW Levels



Reduction
of Storage



Seawater
Intrusion



Degraded
Quality



Land
Subsidence



Surface Water
Depletion

The Vina Subbasin is a portion of the larger Sacramento Valley Groundwater Basin covering approximately 184,917 acres. The subbasin is located entirely within Butte County and is generally bounded by Tehama County to the north, to the west by the Sacramento River, to the south at the border of Western Canal Water District, and to the east by the edge of the alluvial basin as defined by Bulletin 118.

Vina GSA: Governs the majority of the subbasin and consists of the following entities:

- City of Chico
- County of Butte
- Durham Irrigation District

Vina GSA Contact Information

Email: VinaGSA@gmail.com

Phone: (530) 552-3592

Address: 308 Nelson Ave. Oroville, CA
95965

Meetings: Chico City Council Chambers,
421 Main Street Chico, CA 95928

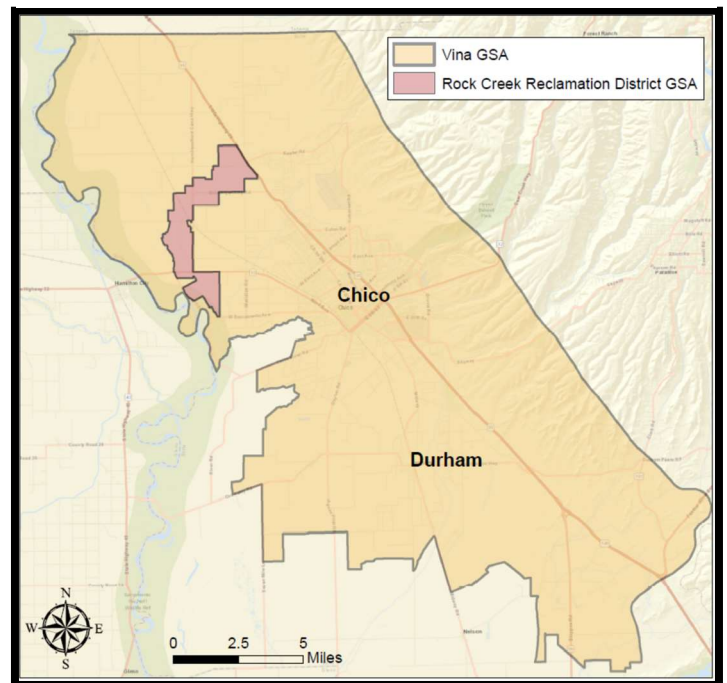
Rock Creek Reclamation District (RCRD)

GSA: Governs areas within its boundaries

RCRD GSA Contact Information

Website: www.rockcreekreclamation.com

Vina Subbasin



SGMA TIMELINE

- 2017 Formation of the GSAs
- January 2022 Completed GSPs
- Annual and 5-year reports thereafter submitted by the GSAs to meet interim milestones
- 2042 GSPs are fully implemented and sustainability is achieved

HOW DO I GET INVOLVED?

SGMA REQUIRES ALL GROUNDWATER SUSTAINABILITY AGENCIES TO ENGAGE IN OUTREACH AND INCLUDE STAKEHOLDERS IN GROUNDWATER SUSTAINABILITY PLAN DEVELOPMENT.

- To receive meeting notifications and updates, register on the Butte County SGMA email list by signing up on our website:
 - Click the orange "Join our Email List" button at <https://www.buttecounty.net/waterresourceconservation/>
 - or text BCWATER to 22828
- You can also view general information on SGMA, Groundwater Sustainability Agencies, Groundwater Sustainability Plans and other related topics on the Groundwater Exchange website. <https://groundwaterexchange.org/>

SGMA requires the consideration of the interests of all beneficial uses and users of groundwater, and encourages involvement of diverse social, cultural, and economic elements of the population within the subbasin during GSP preparation and implementation.

Butte County's Department of Water And Resource Conservation alongside the various other groundwater sustainability agencies, will continue to participate in stakeholder outreach, encouraging involvement and disseminating information regarding SGMA activity within these subbasins for our communities.

DEPARTMENT OF WATER AND RESOURCE CONSERVATION STAFF

DIRECTOR: PAUL GOSSELIN
pgosselin@buttecounty.net

ASSISTANT DIRECTOR: CHRISTINA BUCK
cbuck@buttecounty.net

WATER RESOURCE SCIENTIST: KELLY PETERSON
kpeterson@buttecounty.net

ADMINISTRATIVE ANALYST: AUTUM THOMAS
athomas@buttecounty.net

PHONE: (530) 552-3595
ADDRESS: 308 Nelson Avenue Oroville, CA 95965
Website: www.buttecounty.net/waterresourceconservation

